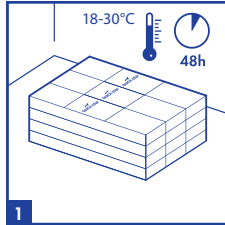
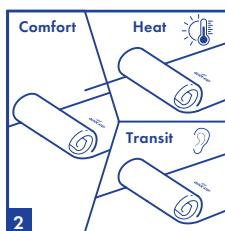


Golden Rules



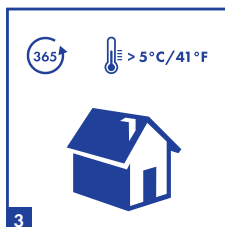
Installation must be performed between 18-30°C. Quick-Step Vinyl floors must be acclimatized in the room of installation between 18-30°C (64-86°F) for a period of at least 48 hours before installation. This floor- & roomtemperature needs to be maintained prior to, during and for at least 24 hours after the installation is completed.



Quick-Step Vinyl has been designed for indoor heated (> 5°C) (41°F) installations, preferably at normal room temperature. Quick-Step Vinyl cannot be installed in solariums, seasonal porches, camping trailers, boats and other unheated applications. We strongly recommend to use the special Quick-Step Vinyl underlays.

If the temperature of your floor is expected to raise up to or above 45°C (113°F), for instance due to direct sunlight, it is mandatory to use the Quick-Step HEAT underlay on a levelled subfloor or to install without underlay on a levelled subfloor.

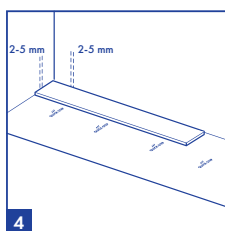
A heavy wood stove, electrical accumulators, and other fixed objects should not be installed on top of the QUICK-STEP vinyl click floor. It is recommended to install the stove/accumulator first on top of a protection plate, and install the QUICK-STEP vinyl around up to the plate and respect the expansion gaps. For other critical situations with high local temperatures it is recommended to use QUICK-STEP glue down vinyl. If you have any concerns about the temperature of your floor, please contact the Quick-Step technical department.



Keep indoor climate conditions above 5°C.

Ensure that the indoor climate conditions are always kept > 5°C (41°F) and preferably between 18-30°C (64-86°F).

If the floor temperature exceeds 45°C, you must use the HEAT underlay.



Make sure that you leave an expansion gap of minimum 2mm (0,08inch), preferably 5mm (0,20inch).

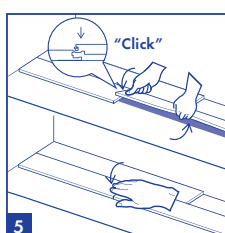
For installations with floor heating, you need to leave an expansion gap of minimum 5mm (0,20inch).

Never block the floor.

If heavy/fixed objects (ex. kitchen, kitchen island, build-in cabinets, heavy stoves) are on the floor they act as a wall, so the minimum expansion should be foreseen there.

Floating installation should stay floating!

If this is not possible, use our QUICK-STEP glue down vinyl.



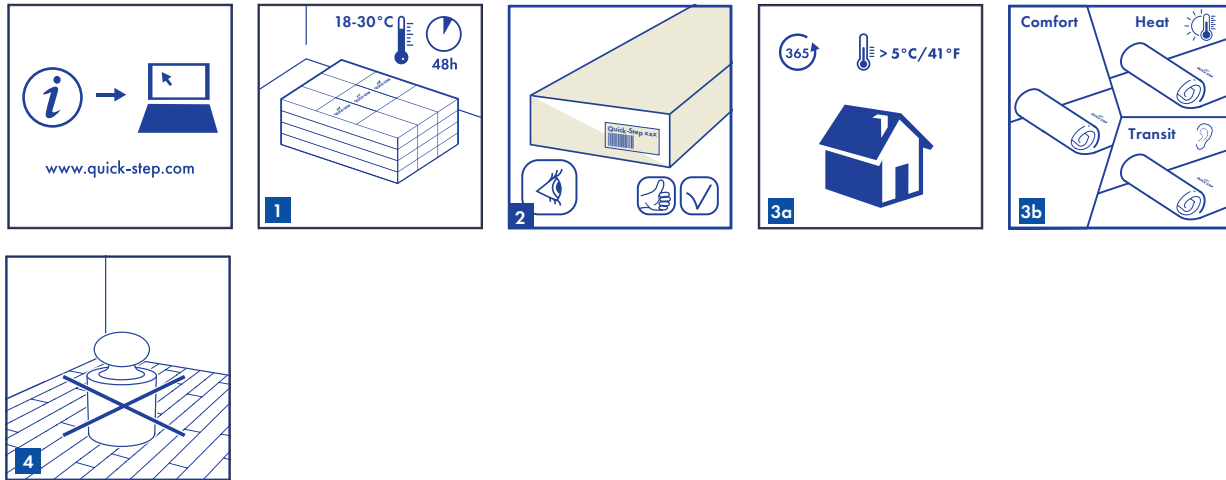
Click-it! Slightly lift the plank to be installed by holding your hand underneath about 25 cm from the end joint. Push the short side joint down gently with your thumb moving from the inner corner towards the outside until you hear/feel a click. Always check each short side joint (height differences and openings) before continuing. You can press down gently with your thumb on top of every short end joint to ensure good locking

This is the easiest method for fitting the Uniclic Multifit for Vinyl Flex click panels.

Remark: Illume is Uniclic-Uniclic, so please take a close look at the installation info below.

In order to obtain a good result, we advise all parties to follow all given instructions carefully.

Please make sure that the floor user has a copy of this document.
National regulations regarding floor application must always be followed.



1. PREPARATION

1

Always store and transport Quick-Step Vinyl floors carefully to prevent distortions. Store and transport the boxes on a flat surface in neat stacks. Never store the boxes upright or in moist, dusty rooms or places with extreme temperatures. Quick-Step Vinyl floors must be acclimatized in the room of installation between 18-30°C (64-86°F) for a period of at least 48 hours before installation. This floor- & roomtemperature needs to be maintained prior to, during and for at least 24 hours after the installation is completed. Installation must be performed between 18-30°C.

2

Quick-Step Vinyl floors can be bought in different formats, decors and qualities. Make sure you have received the correct flooring that you ordered before starting the installation. It is always a good idea to store the end labels together with your purchasing receipt.

3

Quick-Step Vinyl has been designed for indoor heated (> 5°C) (41°F) installations, preferably at normal room temperature. Quick-Step Vinyl cannot be installed in solariums, seasonal porches, camping trailers, boats or any other unheated application. If you have any concerns about the temperature of your floor, please contact the Quick-Step technical department. We strongly recommend to use the special Quick-Step Vinyl underlays.

If the temperature of your floor is expected to raise up to or above 45°C (113°F) due to direct sunlight, it is mandatory to use the Heat underlay on a levelled subfloor or to install without underlay on a levelled subfloor.

If you have any concerns about the temperature of your floor, please contact the Quick-Step technical department.

4

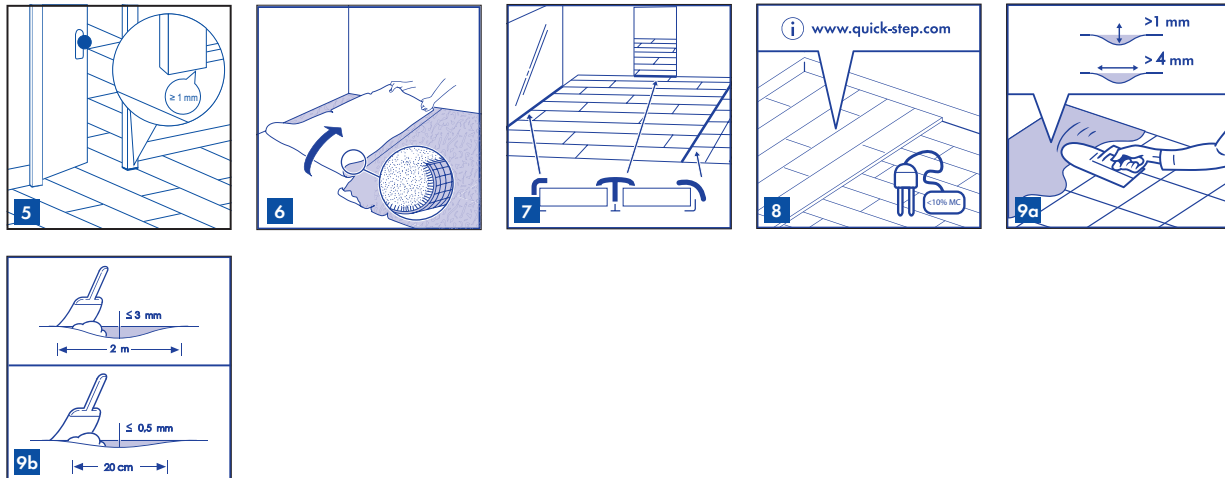
Never block the floor. If heavy / fixed objects (ex. kitchen, kitchen island, build-in cabinets, heavy stoves, electrical accumulators, doorframes, stairs and others) are on the floor, they act as a wall.

* Heavy objects should be installed first and not placed on top of the Quick-Step Vinyl Flex floor.

* For heavy objects with radiant heat, it is recommended to install the stove/accumulator first on top of a protection plate, and install the Quick-Step Vinyl Flex around the plate and respect the expansion gaps.

The Quick-Step Vinyl Flex floor must be able to move around the heavy objects to avoid open joints and separating planks. The expansion gap size must be respected around all heavy/fixed objects.

A floating installation should ALWAYS stay floating! If this is not possible, use our Quick-Step Glue down Vinyl.



5

If the doorframe is installed after the floor installation, please make sure that a min. 1mm vertical gap is left between the base of the doorframe and the surface of the floor.

6

The type of subfloor, its quality and its preparation has a big influence on the final installation result. If the subfloor is not appropriate for the installation of Quick-Step Vinyl then necessary actions should be taken. Contact your Quick-Step Vinyl dealer, who will be more than happy to help you. Be aware that unevenness in the subfloor may leave marks and can create gaps in your Quick-Step Vinyl floor. The subfloor should be stable and firmly fixed. Furthermore it cannot be soft, damaged or loose laid.

- The following floor coverings have to be removed: Carpet, needle felt, cushion vinyl, floating floorcoverings.
- Does not have to be removed: ceramic tiles, glue down laminate and glue down lacquered parquet, fixed wood boards, etc.
- Does not have to be removed, but use of PE-foil is mandatory to avoid migration: glued PVC, hard PVC, VCT, glued linoleum and glue down oiled parquet.

7

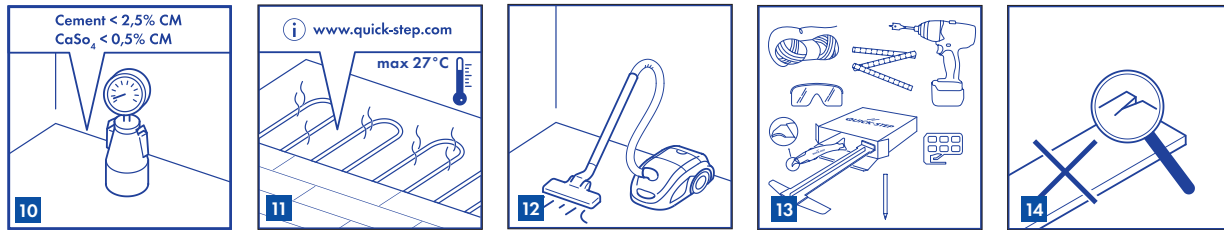
A transition profile is needed when the temperatures in adjacent rooms will variate differently above and below the T-range of 18 - 30°C. A subfloor control joint can be covered with Quick-Step Vinyl Flex click flooring. Please check the subfloor flatness requirements. Building movement joints must be transposed to the Quick-Step Vinyl Flex flooring and a profile must be used.

8

In case of installation on a wooden subfloor, please remove any existing floor covering first. No signs of mold and/or insect infestations should be present. If there is moist in the woodbased subfloor or there is no proper moisture barrier below the woodbased subfloor it has to be removed first. Reason is that the wood will rot after time because the moist is blocked by the new flooring and its underlay. Make sure the subfloor is level and nail or screw down any loose parts. Apply a suitable wooden floor panel, level floor, or use levelling compound on top for a perfect subfloor preparation. The levelling boards must be fixed with an appropriate glue or every 30cm with screws. An eventual crawl space under the plank floor must be sufficiently ventilated. Remove any obstacles and make sure there is sufficient ventilation (minimum 4 cm² total ventilation openings per m² of floor). The moisture content of the wood must not exceed 10%.

9

Make sure the subfloor is completely flat. Cement joints between tiles or other gaps of more than 1 mm (0,04inch) in depth and 4 mm (0,16inch) in width should be levelled. For Quick-Step Vinyl Flex Click flooring: any unevenness of more than 0,5mm (0,02inch) over a length of 20cm (7,87inch) must be levelled out. The same applies to unevenness of more than 3mm (0,12inch) over a length of 2m (78,7inch). Bumps should be removed by sanding or scraping. If an appropriate levelling compound is required, check if a primer or sealer is needed. In most cases, the use of an underlay may help for levelling of the subfloor.



10

Mineral subfloors such as concrete must be sufficiently dry prior to installation. Installation on cement subfloor requires a $CM < 2,5\%$ (75 % RH). An installation on anhydrite subfloor requires a $CM < 0,5\%$ (50% RH). If floor heating is used, cement subfloor requires a $CM < 1,5\%$ (60% RH) and anhydrite subfloor requires a $CM < 0,3$ (40% RH). (see Floor Heating Instructions) **Always measure, record and keep your moisture content results.** A new cement screed floor must dry at least 1 week per 1cm (3/8) thickness up to 4cm (1-1/2). Thicknesses over 4cm (1-1/2) require twice as much drying time. For example, a 6cm (2-1/2) concrete subfloor must dry at least 8 weeks.

11

Separate rooms with and without floor heating, and/or with different temperature controllers: must be installed with a T-profile with respect of the expansion gaps of minimum 5mm on each side. Additional instructions apply if there is underfloor heating or cooling. For health and safety reasons and to avoid problems with the Quick-Step Floor, certain important basic rules need to be followed:

Floor Heating

- Firstly it is very important to ensure a floor surface temperature of maximum 27°C (80°F)
- In case of a floating installation, a suitable underlay must be chosen. The total Thermal Resistance (R) of your Quick-Step vinyl floor in combination with the underlay must be not higher than 0,15 m²K/W
- Always change the temperature gradually at the start and end of a heating period
- Finally try to avoid heat accumulation by carpets or rugs or by leaving insufficient space between furniture and the floor.
- Some water based and electrical floor heating systems are permitted. See separate installation instruction Floor Heating and Floor Cooling

Floor Cooling

- For floor cooling, a heat-resistance of $< 0,09\text{m}^2\text{K}/\text{W}$ is prescribed. The heat-resistance of Quick-Step Vinyl Floor varies between 0,02 m²K/W and 0,07 m²K/W (with underlay). So account should be taken here of a certain small loss of capacity.
- Ensure a proper safety system including automatic sensors that detect when the dew point (= start of condensation) is reached below or in the floorcoverings and then switch off the cooling.

For a good preparation, read also the separate installation instructions for Floor Heating and Floor Cooling on www.Quick-Step.com

12

Make sure that the subfloor is dry, flat, stable, clean and free from grease and chemical substances. If needed, scrape off and clean up old adhesives. Prior to installation, carefully remove all debris (including nails), sweep and vacuum. Repair major surface imperfections and large cracks. It is recommended to remove old skirtings and to install new ones after the installation of the floor.

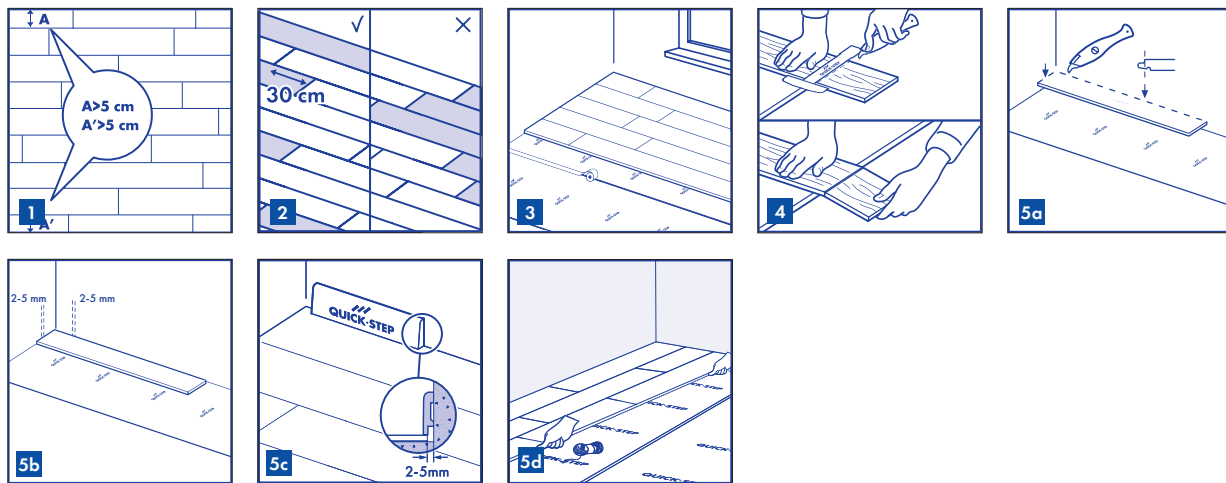
13

The following standard tools are needed: measurer, safety glasses, thin rope, gloves and a pencil. Never use a tapping block during the installation of Quick-Step Vinyl Flex with Uniclic Multifit. In addition to the standard tools, we recommend to use the Quick-Step Vinyl Flex concave cutter knife and installation tool. The latter serves as a 2-in-1 pulling bar and a carpenters square.

The use of all accessories other than Quick-Step Vinyl accessories (for example wrong underlay) may cause damage to your Quick-Step Vinyl floor. In such cases the guarantee provided by Quick-Step will be void. For this reason we advise to use only Quick-Step Vinyl accessories, which have been specially designed and tested for use with your vinyl.

14

Check all panels before and during installation in optimal light conditions. Defective panels must never be used. An installed plank is considered as accepted and cannot be claimed.



2. INSTALLATION

1

Before starting, carefully measure the length and the width of the room to plan a precise layout to achieve a balanced appearance of the floor. This is very important when installing typical tile decors. This will also ensure that you won't end up with the last row being too narrow. If the last row will be less than 5cm, the installation will be easier and better if you reduce the width of the planks of the first row.

2

During installation, make sure that you mix the floor panels sufficiently so that there are not too many identical, lighter or darker panels next to each other. To obtain the best visual effect, it is best to fit the panels in the direction of the longest wall and/or parallel to the incidence of light. Ensure that the end joints of the panels in 2 successive rows are never in line, they should be staggered by at least 30 cm (12 inch). For a natural look and better mechanical strength, we recommend no installation of the planks in a pattern but at random formation.

3

First install the underlay, line/line or room/room, if one is needed. With Quick-Step Vinyl click panels you can choose where you want to begin. Think about what will be the easiest way to install the floor. We advise to start in the left corner of the room and fit an underlay if needed. We strongly recommend to use the special Quick-Step Vinyl underlays, which makes installing easier and has a sound-reducing and levelling function.

An underlay which is too thick or too soft (CS < 400kPa) or too sticky or made from the wrong material will damage your floor. A laminate/parquet underlay is not suitable for click vinyl. You can find out more information on the packaging of your underlay or from your dealer. When installing the next line of underlay, it is recommended to connect the underlays using thin tape to avoid overlapping and gapping.

4

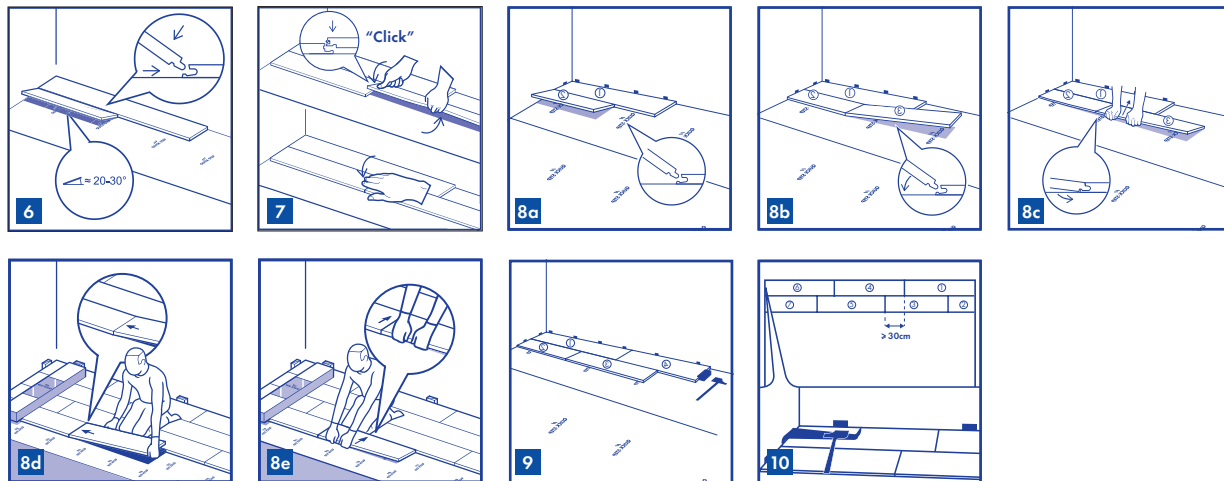
Quick-Step Vinyl floors can easily be cut with the decor side face up using a special concave vinyl cutting knife. For cutting the vinyl plank, mark the line and use the knife to make a firm cut in the surface. Then break off the plank using both hands. You never need to completely cut through the vinyl.

5

The planks against the walls are to be stripped off their click system. Start with the first plank that will be installed in the corner. Remove the click profile on both the long and the short side of the plank by sawing. For other planks of the first row (not in the corner), remove the click profile on the long side that will be directly next to the wall. Any side of a plank that is directly next to a wall, must have its click profile removed, in order to ensure the required expansion gap.

Make sure that you leave an expansion gap of minimum 2mm (0,08inch), preferably 5 mm (0,20inch). For easy way of working you can use a leftover piece of Quick-Step Vinyl floor as distance spacer. For installations with floor heating, you need to leave an expansion gap of minimum 5mm (0,20inch).

After the installation of each plank and before continuing with the next plank, check each short and long side joint to make sure there are no height differences and no openings. In order to make the start of the installation easier, assemble the first 3 rows away from the wall, so you can sit on the planks during the assembly. Then slide the first 3 rows at the wanted position close to the wall with distance spacers in place. Take a thin rope and hold it alongside the installed planks to check and adjust the straightness of your installed first 3 rows. It is recommended to make additional checks of the straightness, in order to confirm the straightness during the installation. Remember to use the distance spacers for the expansion gap of minimum 2mm (0,08inch) and preferably 5mm (0,20inch) along the perimeter.



FOR QUICK-STEP BALANCE + PULSE + AMBIENT: PLANKS AND TILES WITH UNICLIC® ON THE LONG SIDE AND A MULTIFIT (DROP DOWN) ON THE SHORT SIDE OF THE PANELS:

6

Turn the long side of the first panel of the second row into the already fitted panel at an angle of 20 to 30°. Move the panel to be fitted slightly up and down and at the same time exert some forward pressure. The panels will click together.

7

Then slide the third plank together horizontally. Slightly lift the plank to be installed by holding your hand underneath about 25cm from the end. Push the short side joint down gently with your thumb moving from the inner corner towards the outside until you hear and/or feel a click. Always check each short side joint (height differences and openings) before continuing. You can press down gently with your thumb on top of every short end joint to ensure good locking. Don't use a hammer or tapping block as it may possible harm your click connection. This is the easiest method for installing the Multifit click panels. Continue the installation like this row by row towards the end of the room. The easiest way is to be seated on your installed planks.

FOR QUICK-STEP ILLUME: THERE IS UNICLIC® ON THE LONG SIDE AND UNICLIC® ON THE SHORT SIDE OF THE PLANK, SO THE INSTALLATION WILL BE A LITTLE BIT DIFFERENT:

8

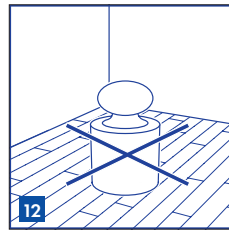
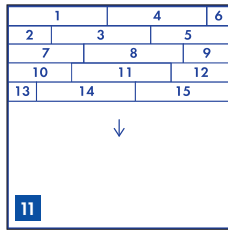
Uniclic can be installed in two different ways. The preferred method is method A (angle-angle): First, rotate the short side of the plank to be installed, into the short side of the already installed plank, by means of the angle principle. Then raise the newly installed plank to an angle of 20°-30°. This will also raise the previously installed planks in the same row, because their short sides are already connected. Now place your BOTH hands close to the joint as shown in the figure and pull the long side of the plank towards you. The panels will now click together. You can either insert the tongue into the groove, or the groove on to the tongue. The tongue in groove method is the most common and easiest way.

9

If method A is not possible (at hard to reach places by example), you can use method B (tapping): With Uniclic you can also join the panels, by tapping the planks into each other, eliminating the need to lift them. This method requires the use of the special Uniclic tapping block. The planks should not be joined with a single tap. To avoid damaging the panels you must tap them together gradually. You can angle the short or long side of the plank first and then tap to connect the other side.

10

In places where it is too difficult to install the Uniclic planks with the tapping block (e.g. against the wall), you can pull them together using the pull-bar and a hammer.



11

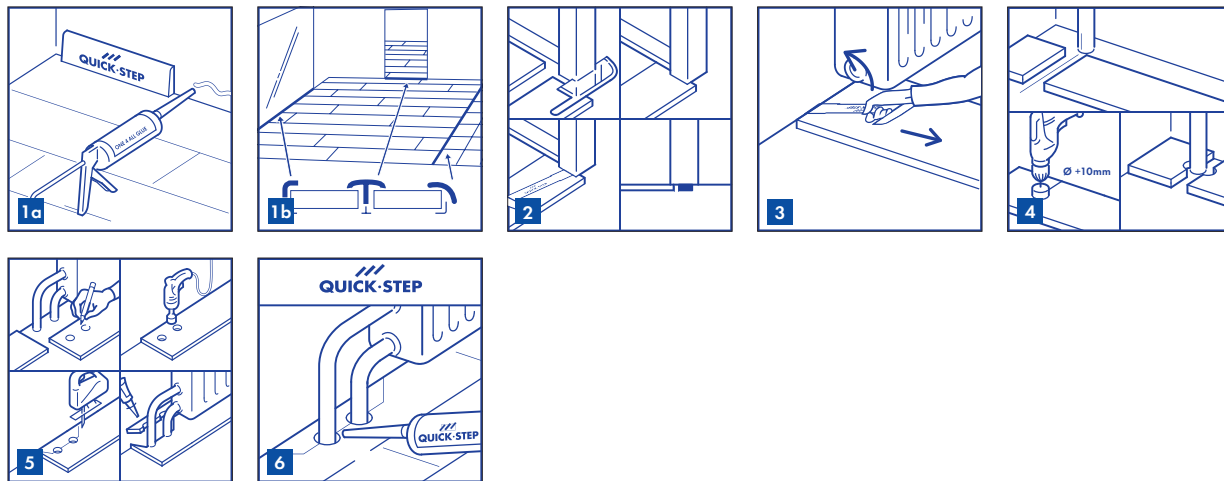
Continue the installation like this - row by row - towards the end of the room. The easiest way to work is to sit on the already installed planks. Separate rooms with and without floor heating, or with different temperature controllers, or e.g. corridor vs. kitchen should be installed with a transition profile and an expansion gap of minimum 5mm.

A transition profile is also needed, when the temperatures in adjacent rooms will variate differently above and below the temperature range of 18 - 30°C.

12

Never block the floor. If heavy/fixed objects (ex. kitchen, kitchen island, build-in cabinets, heavy stoves, electrical accumulators, and others) are on the floor they act as a wall, so the minimum expansion should be foreseen there.

A floating installation should ALWAYS stay floating! If this is not possible, use our Quick-Step Glue down Vinyl.



3. FINISHING

1

Remove all spacers. Inspect the final surface of the installed floor.

Install the skirting-board against the wall. Never attach the skirting-board to the floor. This method allows the floor to expand and contract under the skirting-board. Standardly we recommend not to fill the expansion gaps with silicone or other kit. BUT only in small places with a high moisture level like bathrooms and toilets and where the floor surface is < 10 m², you can fill the expansion gaps with Quick-Step Vinyl Hydrokit. If you fill these expansion gaps, then the gaps must be minimum 5mm AND you are obliged to use a T-profile to disconnect that room from the other rooms.

2

When the new flooring meets a threshold or a doorway, we recommend undercutting the door frames or moldings. To secure the right cut, turn a plank upside down with the underlay below, and place it on the floor up to the door frame. This ensures that the cut will be made at the correct height. Then place a multi tool or hand saw flat against the plank and simply cut through the frame. Remove the cut out piece and vacuum away any debris.

Install the plank on the long side, keeping the short side close to the undercut molding. Then slide the plank underneath the undercut towards the already installed plank in order to close the short end joint. Use the Quick-Step pull bar and/or tapping block to secure absolute tightness in the long and short joint. When sawing the panels make sure that the expansion gap under the door is respected.

3

If it is difficult to tilt the planks (e.g. under radiators), use the Quick-Step Vinyl installation tool to pull the panels horizontally together.

4

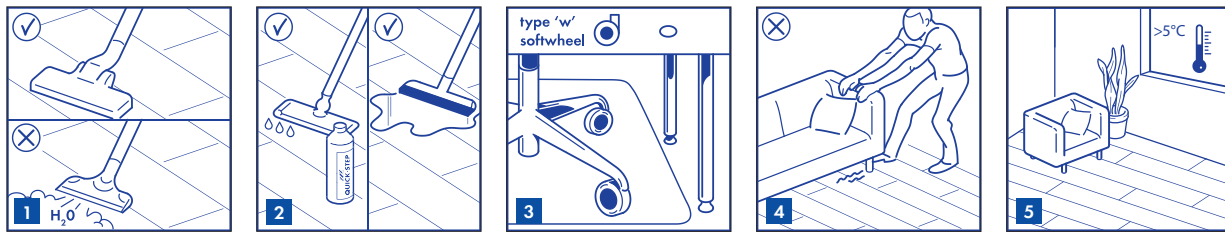
In rows where there is a pipe, make sure the pipe falls exactly in line with the short side of the two panels. Take a drill bit with the same diameter as the pipe plus 10 mm (0,4inch). Click the panels together on the short side and add a third plank on the long side for stability. Drill a hole centered on the joint between the two panels. Now you can install the panels.

5

In case of a double pipe, drill a hole at each of the marked points that is equivalent to the diameter of the pipes plus 10 mm. If located on the long side of the plank, make a 45 degree cut from each hole to the edge of the plank.

6

Then, using an appropriate glue along the cut edges of the piece you cut out, glue the piece in place. Be sure no glue comes between the cut out piece and the subfloor. For a perfect finish around pipes, use Quick-Step® pipe covers (floating placement).



4. MAINTENANCE

1

You can immediately walk on your new Quick-Step Vinyl floor after installation. For maintenance, we advise a Quick-Step mop or vacuum cleaner. Make sure the vacuum cleaner is equipped with soft wheels and a special brush to avoid scratches on your floor. The use of a steam cleaner is forbidden.

2

Your vinyl floor can be cleaned with a damp or wet mop. Quick-Step Vinyl Clean is a maintenance product specifically developed to keep your new vinyl floor in top condition. Never use natural soap detergents since this will leave a sticky film on the surface which will collect dust and dirt and will be difficult to remove. The same with detergents containing scratching particles, these might matt down the surface. It is always important not to overdose any cleaning detergent, as this will lead to a build up of cured detergent which is difficult to remove without using a vinyl stripper. For further information on how to clean and maintain your floor, please visit www.Quick-Step.com. For specific cleaning instructions in commercial applications or projects, you can contact the Quick-Step technical department. Always remove spilled liquids immediately from the floor.

3

Protect furniture and chair legs. Use (office) chairs type W and seats with soft wheels that are suitable for a vinyl floor and/or use a suitable desk mat.

4

Never drag heavy items of furniture over the floor, but lift them up. Make sure furniture legs have a large surface and are provided with non-staining floor protectors. The taller and/or wider the furniture feet are, the greater the repartition of weight will be on the floor and the less chance there is to damage the floor. Place non-rubber backed mats at all outside entrances to prevent dirt, grit and soil from being tracked onto your floor. This will reduce damages, the maintenance requirement and extend the life of your floor. Please note that prolonged contact with some rubber types can cause a permanent stain. Do not allow cigarettes, matches or other very hot items to contact the floor as this may cause permanent damage.

5

Ensure that the indoor climate conditions are always kept $> 5^{\circ}\text{C}$ (41°F) and preferably between $18 - 30^{\circ}\text{C}$ ($64 - 86^{\circ}\text{F}$). It is also important to keep the subfloor in the above mentioned temperature range.