

Beyond your imagination



Modular Resilient Flooring





Textures

Safe

Inspiration

Genuine

Reliable

Unlimited

Dedicated

Commitment

Unlimited

Solid

Dedicated

Class

Exclusive

Nature

Easy

Sustainability

Design

Care

Certified

Unlimited

Certified

Performance

Textures

The Green-Flor®

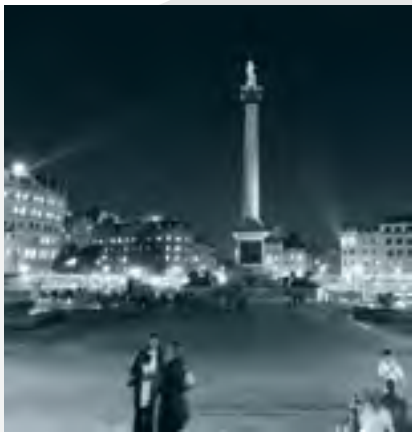


True Spirit

The power of design combined with using the best technologies for creating surface structures, providing an exact synchronized relief accentuating and following the natural pattern of the wood specie with its characteristic grains, distinguishes the registered embossed True Spirit Collection from any other alternative in the market. Enhanced with a subtle bevel on 4 sides of the plank, this collection offers you a top class product and unprecedented close to the original natural products. The 3 series within this collection give you an extensive choice fitting to your requirements; crafted - smoke treated oak, original - genuine oak or design - natural walnut. There's no substitute for the best !

New Square

The unique natural color gradation in the subtle designs of the New Square Collection emphasizes that stone is a truly timeless material, yet totally in the core of the last interior trends. The tile is beautifully smooth, extremely wear-resistant and is very easy to clean whilst conserving a feel and touch which is warm and comfortable. This unique tile design furthermore distinguishes itself by its robust size of 60 x 60 cm. The exclusivity you are looking for !



Performance

PERFORMANCE 70 is a modular resilient flooring developed specifically for heavy-traffic areas. This loose-lay flooring, is quick and easy to install with no need for permanent glue or hot welding. Tiles or planks can be replaced or removed and re-installed without damage to the sub- or original hard flooring below and does not leave any residues, being interesting for both owner and tenant in commercial or residential-housing spaces. PERFORMANCE 70 in projects is not only an ideal and extra efficient alternative for retail areas, hotels or offices and buildings where quick installation is a must, but also ultimately fit for any office where there are raised floors with frequent access required to cables and pipes. The collection provides you a balanced design- and color pallet for the plank and a unique natural color gradation in the

subtle designs of the tile. Both enhanced with a surface texture generating the distinctive and original natural appearance. Together with the subtle v-groove on 4 sides, it utterly contributes to a high class atmosphere in every space. The metamorphosis of your interior will be swift and sure!

Collections

Master Collection

Character, plank size but above all a wide, balanced design- and color pallet in the core of the latest interior trends makes the Master Collection stand out, as a genuine through nature inspired appearance. Enhanced with a natural surface texture and a subtle v-groove on 4 sides, this exclusive and authentic floor is as close as nature originally provides. Topped by the latest printing techniques, using multiple images in 1 floor, a minimum of duplication and natural appearance is fact. The natural match for your identity !



	Type					
	YOUNG LIVING	Glue	2.0mm / 0.30mm	-	184.1x 1219mm	-
	AUTHENTIC MOOD*	Glue	2.0mm / 0.30mm	-	228.6 x 1219mm	-
	PURE PLAZA*	Glue	2.0mm / 0.30mm	600 x 600mm	-	-
	MASTER COLLECTION	Glue	2.5mm / 0.55mm	-	228.6 x 1219mm	4 sides
	TRUE SPIRIT	Glue	2.5mm / 0.55mm	-	184.1 x 1219mm	4 sides
	MODERN VINTAGE	Glue	2.5mm / 0.55mm	-	76.2 x 304.8mm	4 sides
	NEW SQUARE	Glue	2.5mm / 0.55mm	600 x 600mm	-	-
	NATURE FIT	Click	4.0mm / 0.30-0.70mm	-	184.1 x 1219mm	4 sides
	PERFORMANCE	Loose Lay	5.0mm / 0.30-0.70mm	457.2 x 457.2mm	228.6 x 1219mm	4 sides
	PURE & POWERFUL	Glue	2.5mm / 0.55mm	457.2 x 457.2mm	Other Sizes on request	-

The collections marked with "*" are country specific and are therefore not represented in this brochure

The Green-Flor®

Collections



Pure & Powerful

Pure & Powerful is a surprising collection of fresh uni-color tones. In a smooth surface structure or with e.g. tread plate embossing, you are able to create a unique atmosphere; from hyper modern to industrial vintage. The version with the sparkling inlays gives even a virtual 3D effect to the floor which fascinates your eye. From children bedroom, kitchen, kindergarden, cantine or reception, this floor offers you a great possibility to set you own accents and follow your creative interior concepts.

Pure & Powerful !

Nature Fit 30

The robust plank size combined with a sophisticated surface structure are making the Nature Fit 30 Collection to a must in your interior. Thanks to the uniquely designed Green-Flor® products with Välinge® click system, providing a glue-less locking system for a convenient installation over many different subfloor surfaces, the planks are not adhered to the subfloor and therefore do not need drying time which makes your floor immediately usable. Soft underfoot, essentially waterproof and moisture resistant, makes the floor on top of it very suitable for those places where barefoot walking is desirable.

Comfort, safety but above all a relish for the eye !



Modern Vintage

The Modern Vintage collection is characterized by its timeless spirit and can therefore be combined with any interior design style. This "parquet" in fish-bone or block pattern is originally a traditional and highly specialized product. As of the multiple necessary steps in installation, this can only be performed by the best specialists in order to get the required final result and appearance. By using the latest production- and printing techniques, it is now possible to create a floor with an identical appearance whilst having significantly fewer steps in the installation method and becomes therefore more widely accessible. The Modern Vintage is an exclusive floor with contemporary designs that combines modern and vintage in every sense.

A classic floor with a modern twist!



	Type					
	YOUNG LIVING	Glue	2.0mm / 0.30mm	-	184.1x 1219mm	-
	AUTHENTIC MOOD*	Glue	2.0mm / 0.30mm	-	228.6 x 1219mm	-
	PURE PLAZA*	Glue	2.0mm / 0.30mm	600 x 600mm	-	-
	MASTER COLLECTION	Glue	2.5mm / 0.55mm	-	228.6 x 1219mm	4 sides
	TRUE SPIRIT	Glue	2.5mm / 0.55mm	-	184.1 x 1219mm	4 sides
	MODERN VINTAGE	Glue	2.5mm / 0.55mm	-	76.2 x 304.8mm	4 sides
	NEW SQUARE	Glue	2.5mm / 0.55mm	600 x 600mm	-	-
	NATURE FIT	Click	4.0mm / 0.30-0.70mm	-	184.1 x 1219mm	4 sides
	PERFORMANCE	Loose Lay	5.0mm / 0.30-0.70mm	457.2 x 457.2mm	228.6 x 1219mm	4 sides
	PURE & POWERFUL	Glue	2.5mm / 0.55mm	457.2 x 457.2mm	Other Sizes on request	-

The collections marked with "*" are country specific and are therefore not represented in this brochure

Young Living Authentic Mood Pure Plaza

Specifically developed for heavy domestic and moderate commercial use, the Young Living and Authentic Mood Collection with their modern and serene wood designs, are a relish to the eye. Contemporary colours from grey and taupe to egg yolk are giving the floor a fresh and modern look. With the

use of the latest printing techniques, using multiple images in 1 floor, a minimum of duplication is guaranteed and provides a pure and original appearance. In the same product construction the Pure Plaza Collection offers a tile with a beautiful pallet of stylish black and greys as well as beige shades, accentuating the real beauty of stone floors.

Thé choice for a stylish, young and vital interior !



About Green-Flor®

Worldwide at the top

Taiwan has a worldwide reputation for its high-tech and electronics industry. The modular resilient floors also have their origin in Taiwan and are currently leading in the global market for flooring.

The Green-Flor® product program is one of the latest creations, developed specifically for the European market. The Green-Flor® brand belongs to a group of companies involved in production, wholesale, project- and retail businesses for the past 40 years. Their dedication, commitment, sustainability and technologies combined with their long term ability for developing interior design products, led them to reach the number 1 position in their local Asian market as well as a leading position in exports. At present Green-Flor® distributes its products to Europe, North America, Asia and Australia. Substantial knowledge of the market and supply industry also secured them the access to the best input materials, the latest technical innovations and the best designs.

Through the cooperation of the Green-Flor® organization with locally renowned and specialized flooring and interior decoration companies in different countries, quality, service and the right product advice are guaranteed. Green-Flor® aims to bring an unprecedented wide and unique range of flooring solutions, tailored to your needs.

Technically certified & Safe

Having roots in Asia, Green-Flor® products are already meeting the various standards, set in both Taiwan and Japan. These standards are equal or are based on the American norms-ASTM, hence a vast area is covered. Especially for the Green-Flor® program, all necessary test of conformity to the EN standards passed the laboratory tests in independent European institutes, officially accredited for conveying such tests. The product therefore provides assurance on all important characteristics for floorings like color, durability and dimension stability. The manufacturing process itself has been certified with ISO 9001. With respect to EN 14041, prescribing e.g. fire tests and anti-slip norms, the Green-Flor® products passed all tests successfully, hence are labeled with the CE marking.

Green-Flor® pursues a policy of bringing you only recognized and proven quality, assuring the end-user long-life professional solutions.

Sustainable solutions

In developing the Green-Flor® program, environment, health and indoor air quality are primary concern. All industrial sites for the Green-Flor® products are ISO 14001 certified. In addition, they meet the requirements of EN 14041 relating to harmful substances as formaldehyde and carry therefore the CE label. Furthermore the products are also tested in view of the compulsory REACH test, for production and imports in Europe, which prescribes a of List of >150 Substances of Very High Concern for environment and health, for which Green-Flor® products also passed the test with good result.

All Green-Flor® products are designed in such a way, that they are 100% recyclable with VOC levels (volatile organic compounds) far below the European norms, ensuring good indoor air quality for which the products received the A+ certification. A very easy cleaning and maintenance of the product, also contributes to the reduction of the amount of water, cleaning chemicals and energy used.

For Green-Flor® it's essential to offer sustainable, responsible products which respects and spares the environment, before, during and after the production process and provides a pleasant and healthy living environment.

CONTENTS

The Green-Flor Collections	2
About Green-Flor	6
Why Green-Flor products	8
The segments	12
THE COLLECTIONS IN THE PICTURE	
Master Collection	14
Young Living	22
New Square	28
True Spirit	34
Modern Vintage	48
Nature Fit 30	54
Performance 70	60
Pure & Powerful	70
Design Strips	74
Product Specifications	76
Installation Instruction	78
Maintenance	79



Authentic & Modular

Realistic, authentic and genuine are only a few words, characterizing our designs. The Green-Flor® flooring program offers a wide range of exclusive, noble, timeless, modern and trendsetting designs. The latest advanced printing and production techniques ensure the most accurate reproduction of the original material regarding color, depth and subtle nuances as nature originally provides. To enhance the natural genuine look of the designs, we offer a variety of embossing adapted to the specific designs enabling to create the most natural and original surface texture with its authentic and distinctive grains.



An additional standard feature for some products, having a V-groove at 4 sides of each plank or tile, provides an even more exclusive character and makes it come alive!

Because of the modularity of the product, it is possible to make the size of the planks and tiles to mirror as far as possible to the original products. The modularity also makes designing of your floor more flexible and applying a decorative accent even very easy. Easy to handle, install, maintain and repair are practical though additional important benefits of the Green-Flor® modular resilient floorings.

The Green-Flor® designs are nearly all protected designs, making them unique in the market. Adding for the vast majority of the wood patterns the innovative technique, in which multiple images are mixed in 1 design, the floor has a minimum of pattern repeat resulting in a maximum of natural and genuine appearance. As a result, and in contrast to vinyl flooring in rolls, the Green Flor® modular resilient floorings are barely distinguishable from the real wooden- or stone floors.

Beyond your
imagination

Why Green-Flor® products?

Comfortable in use

The products of Green-Flor® are designed for a maximum of user comfort. Firstly the surface doesn't feel cold like many other hard floorings. Additionally, as of the choice of material for the Green-Flor® modular resilient flooring, the 'walking' sound is significantly decreased compared to the traditional stone floor or for example laminate floor. Besides, the daily maintenance of the



floor is basically restricted to a very easy sweeping or vacuum cleaning and eventually mopping of the floor. And since the floors are constituted of pure compact pvc, they have an excellent resistance against water and most other liquids.

Suitable for underfloor heating and cooling

In new constructions more and more floorings are equipped with underfloor heating and cooling. The Green-Flor® products are designed and fit to be installed in these circumstances.



Carefree use

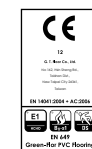
The best proven and longest applied surface treatment for heterogeneous products in the market is a PVC wear layer with a thin protective PU coating. This is also the standard for Green-Flor® products whereas Green-Flor® goes 1 step beyond by bringing the Top Protection Plus system. The Top Protection Plus system is an innovative improved formulation which made this protective coating extra hard and consequently significantly better performing with respect to scratch resistance. Furthermore, an increased quantity and therefore thicker coating layer contributes to the wear resistance of the products and equally results in a substantial longer conservation of the fresh and aesthetical look as well as a prolonged life time of the product itself.

The ultimate dimension stability of the Green-Flor® modular resilient floorings are securing a stable and fixed size of the product during its lifetime, on the contrary to many other brands in this industry. This feature provides a continuing seamless fit between the planks or tiles in your floor which not only contributes to the required uniform look but also guarantees a carefree maintenance.



Highest quality standards

Green-Flor® products are manufactured and continually tested in our own laboratories, according to the highest quality standards in the industry. In addition, all products have been successfully tested in accordance with the strict European standards. The implemented ISO 9001 system in the production, thereby ensures that each product, is precisely traceable up to even the raw materials used. This not only ensures that the products are safe but also guarantees a long and carefree use. A warranty of up to 15 years in home situations, with e.g. a product from the Master Collection is therefore a logical consequence thereof.



*Information sur le niveau d'émission de substances volatiles dans l'air intérieur, présentant un risque de toxicité par inhalation, sur une échelle allant de A+ (très faibles émissions) à C (fortes émissions)

*ISO 16000/AFFSET

Healthy living environment and environmental friendly

The high-quality raw materials used for the production of Green-Flor® modular resilient flooring, can be found in other types of vinyl products you already unnoticed use in everyday life. The automotive industry, food packaging industry, healthcare sector, and certainly multiple products in your interior decoration, are just an example.

It is of course from utmost importance that in the raw materials used for producing the products, no heavy metals or other dangerous components, have been processed. All Green-Flor® products are tested, certified and meeting all national and international legal requirements and in many cases exceed significantly the European standards. This also proven by the REACH certification (Registration, Evaluation, Authorisation of Chemicals) of the entire Green-Flor® program.

In addition, all Green Flor® products are developed in such a way, that they are 100% recyclable and during the life-time of the product very easy to maintain preventing the use of chemicals, excessive amounts of water and energy.

But there is more to create a safe product and everyone will recognize the following situation:

A product which still smells new !

Now besides a happy feeling people in general experience, we should ensure that the substances which are released into the air and are inhaled by you, are safe for your health. This applies to all substances that you may or may not perceive. This especially with respect to the volatile organic compounds (VOC's).

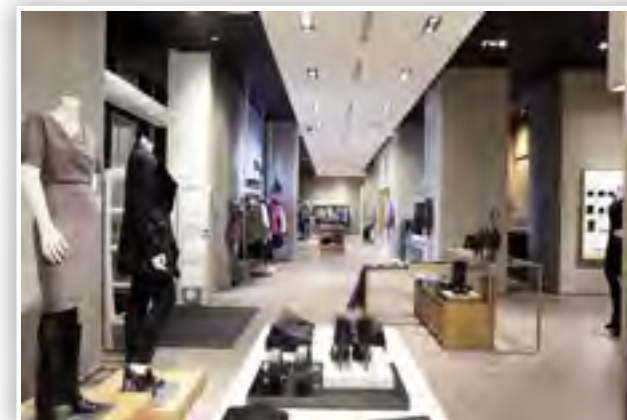
Green-Flor® products have been tested according to the designated norm for these VOC's - ISO 16000, which is an emission test over a period of 28 days. The result is that Green-Flor® products with respect to the total amount of volatile and semi-volatile air born compounds, are releasing even >90% less than the standard of the norm prescribes and thus very well below the safety and health standards in Europe. Next to this, the Green-Flor® products are having the results conform the German AgBB regulations and are certified conform the French A+ regulations.

Green-Flor® makes its name by bringing sustainable, responsible products which respect and conserve the environment before, during and after the production process and contributes to a healthy and enjoyable living environment.





The Segments





Master Collection

Character, plank size but above all a wide, balanced design- and color pallet in the core of the latest interior trends. Enhanced with a surface texture generating the distinctive and original wood grains combined with a subtle v-groove on 4 sides, this exclusive and authentic floor is as close as nature originally provides. Topped by the latest printing techniques, using multiple images in 1 floor, a minimum of duplication is fact and makes the Master Collection stand out, in a through nature inspired genuine appearance. An asset for every commercial project and a must for every interior at home.

The natural match for your identity !



Size: 1219 x 228.6mm(L x W) 2.5mm total thickness / 0.55mm wear layer
 4 sides mini bevel User class: 33/42



GW 056

oak-tundra beige



GW 059

oak-contemporary indium grey

Master Collection



GW 049

pine-fieldcorn brown



GW 054

oak-umber brown



GW 058

oak-light brown



GW 050

pine-flour brown

Master Collection



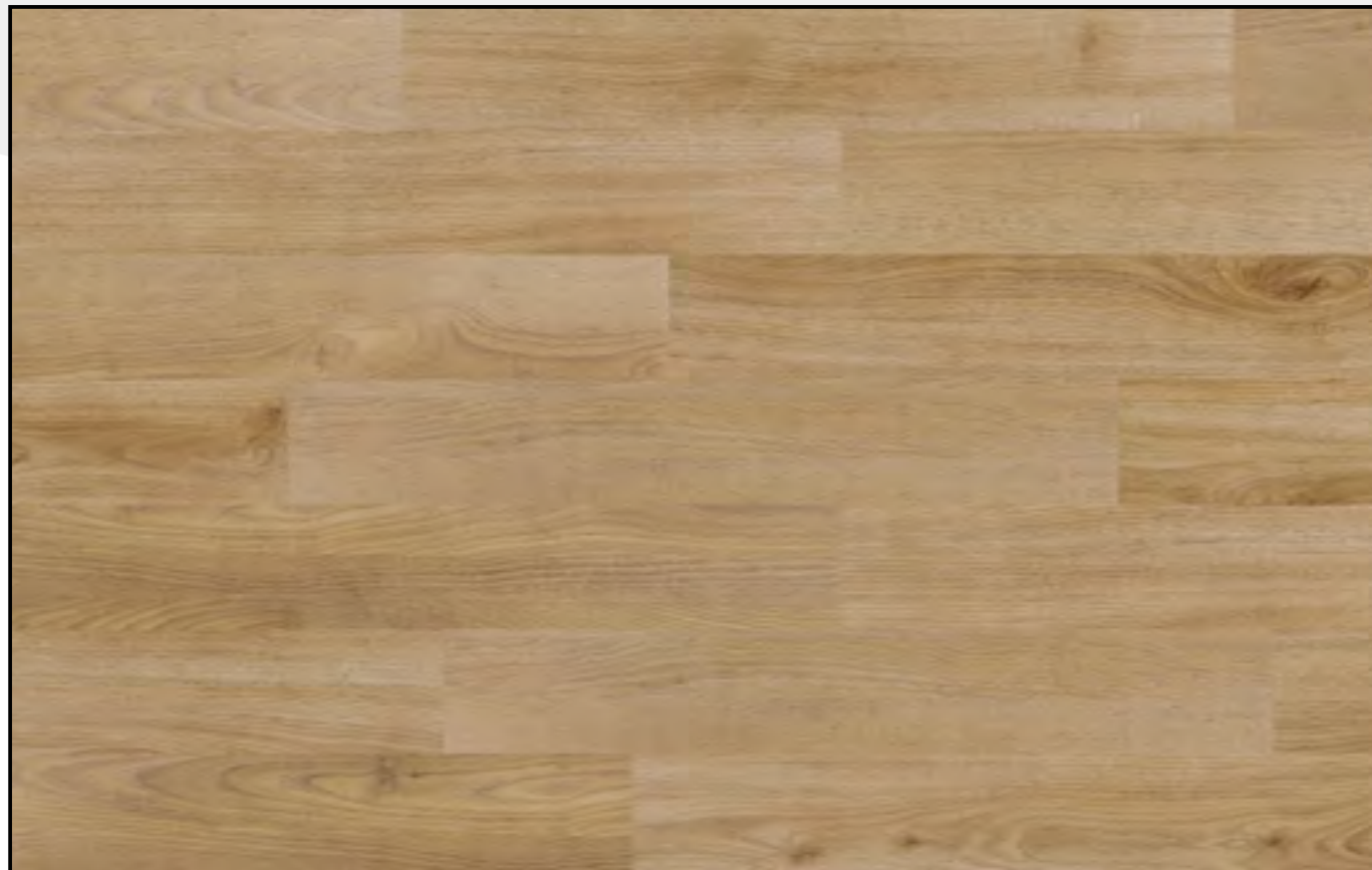
GW 048

pine-barn brown



GW 053

oak-almond brown



GW 055

oak-gold brown



GW 051

pine-terra brown



GW 052

oak-ginger brown



GW 057

oak-graphite grey



Master Collection



Young Living

Specifically developed for heavy domestic and moderate commercial use, the Young Living Collection with modern and serene wood designs, are a relish to the eye. Contemporary colours from grey and taupe to egg yolk are giving the floor a fresh and modern look. With the use of the latest printing techniques, using multiple images in 1 floor, a minimum of duplication is guaranteed and provides a pure and original appearance, accentuating the required ambiance. Thé choice for a stylish, young and vital interior !



Size: 1219 x 184.1mm(L x W) 2.0mm total thickness / 0.3mm wear layer
User class: 23/31



GW 046

oak-pewter grey



GW 042

oak-earth brown

Young Living



GW 043

oak-bronze brown



GW 045

oak-warm taupe



GW 047

oak-hazel brown



GW 041

oak-beige-grey



GW 044

oak-misty yolk

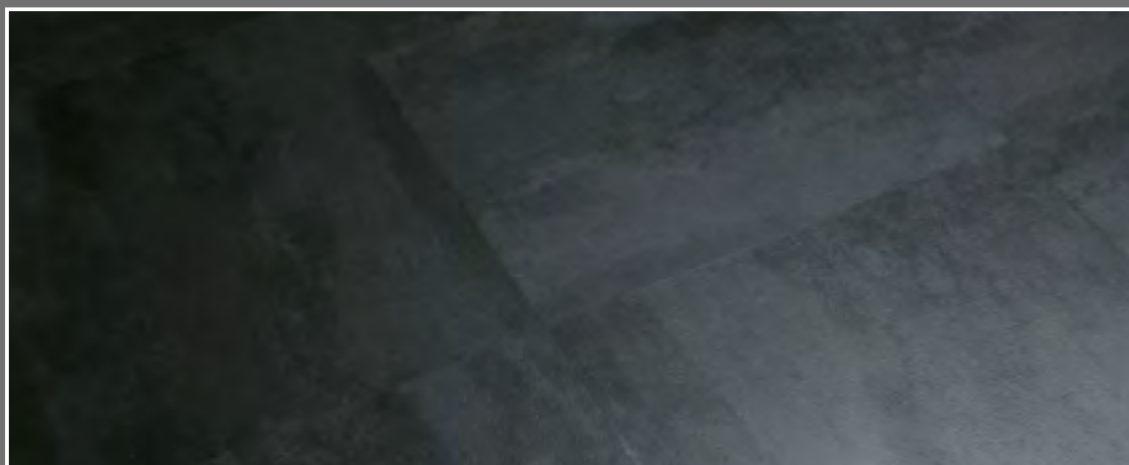


Young Living



New Square

The unique natural colour gradation in the subtle designs of the New Square Collection emphasizes that stone is a truly timeless material, yet totally in the core of the last interior trends. This amazing material, fit for home improvements and commercial designs utterly contributes to a high class atmosphere in every space. The tile is beautifully smooth, extremely wear-resistant and is very easy to clean whilst conserving a feel and touch which is warm and comfortable. This unique tile design furthermore distinguishes itself by its robust size of 60 x 60 cm.
The exclusivity you are looking for !

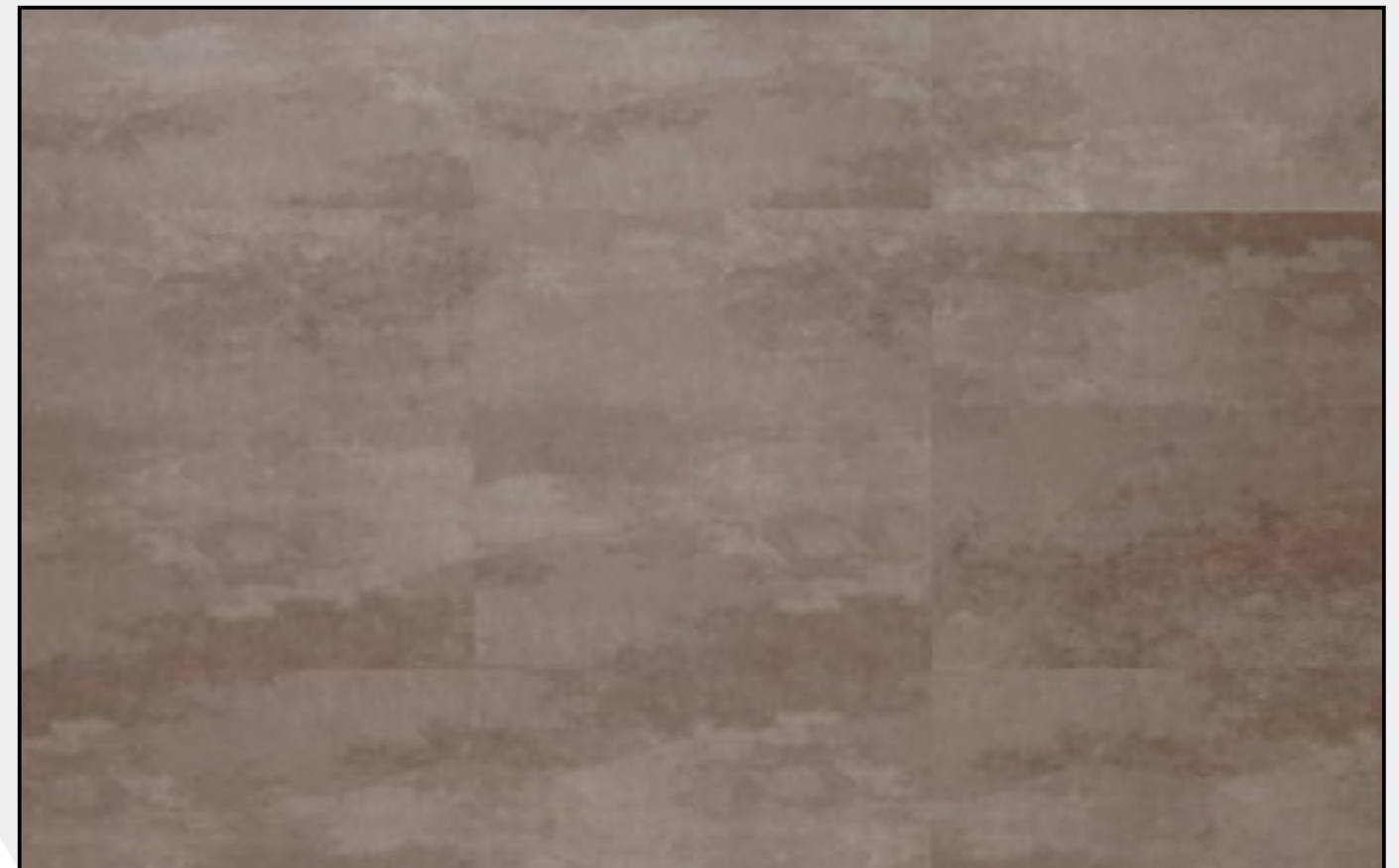


Size: 600 x 600mm(L x W) 2.5mm total thickness / 0.55mm wear layer
User class: 33/42



GT 606

concrete-light brown



GT 603

concrete-umber brown

New Square



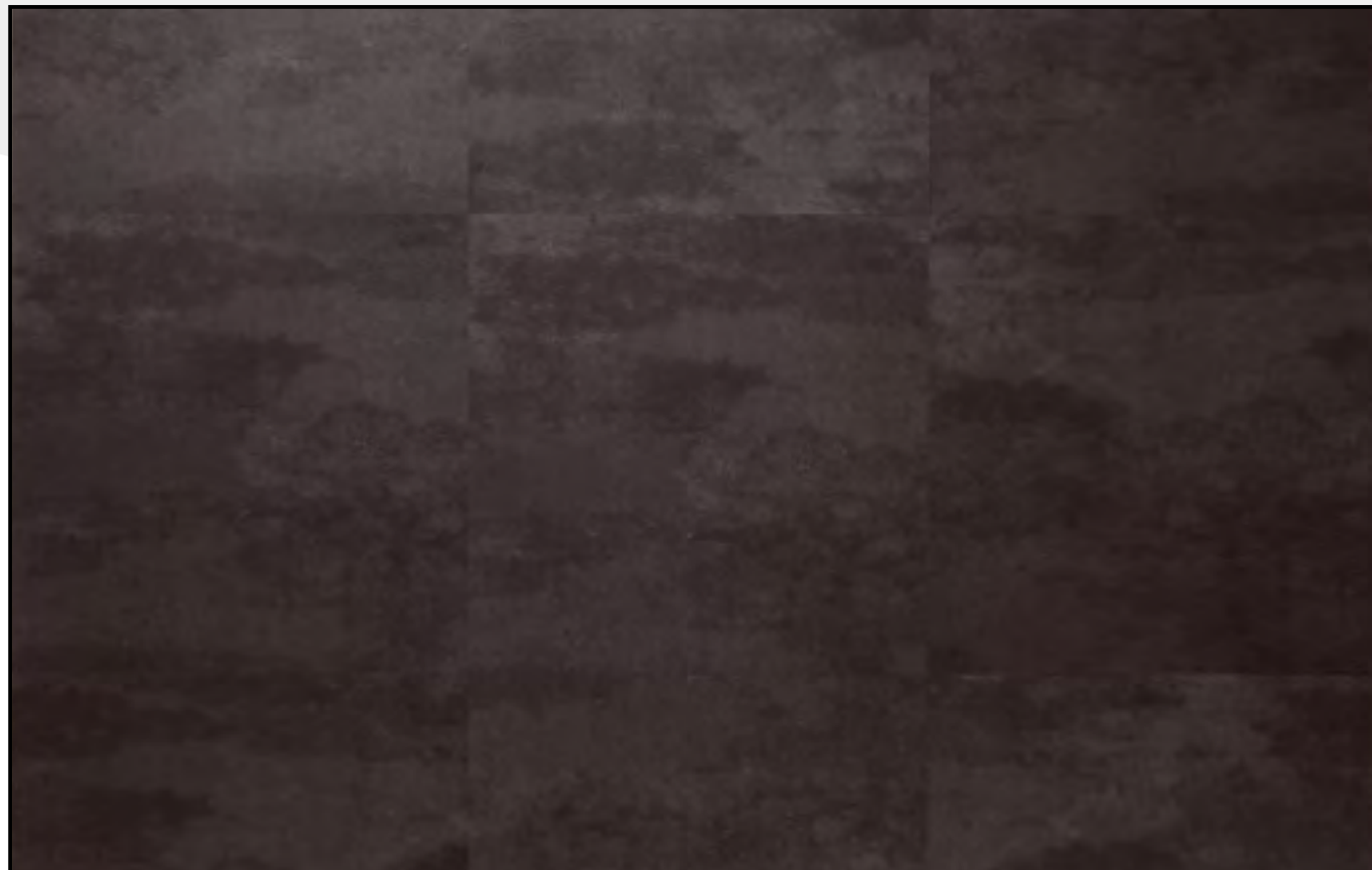
GT 602

concrete-dark brown



GT 605

concrete-indium grey



GT601

concrete-charcoal grey



GT 604

concrete-graphite grey



GT 607

concrete-light grey



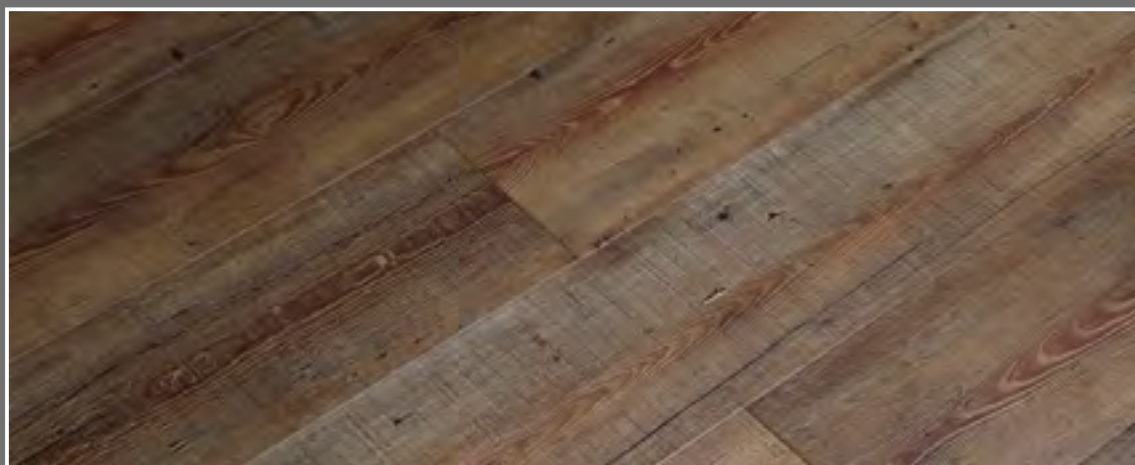
New Square



True Spirit

The power of design combined with using the best technologies for creating surface structures, providing an exact synchronized relief accentuating and following the natural pattern of the wood specie with its characteristic grains, distinguishes the registered embossed True Spirit Collection from any other alternative in the market. Enhanced with a subtle bevel on 4 sides of the plank, this collection offers you a top class product and unprecedented close to the original natural products. The 3 series within this collection give you an extensive choice fitting to your requirements; crafted - smoke treated oak, original - genuine oak or design - natural walnut.

There's no substitute for the best !



Size: 1219 x 184.1mm(L x W) 2.5mm total thickness / 0.55mm wear layer
 4 sides mini bevel User class: 33/42

True Spirit

Original



GWR 013

oak-misty white



GWR 002

oak-light grey

True Spirit Original



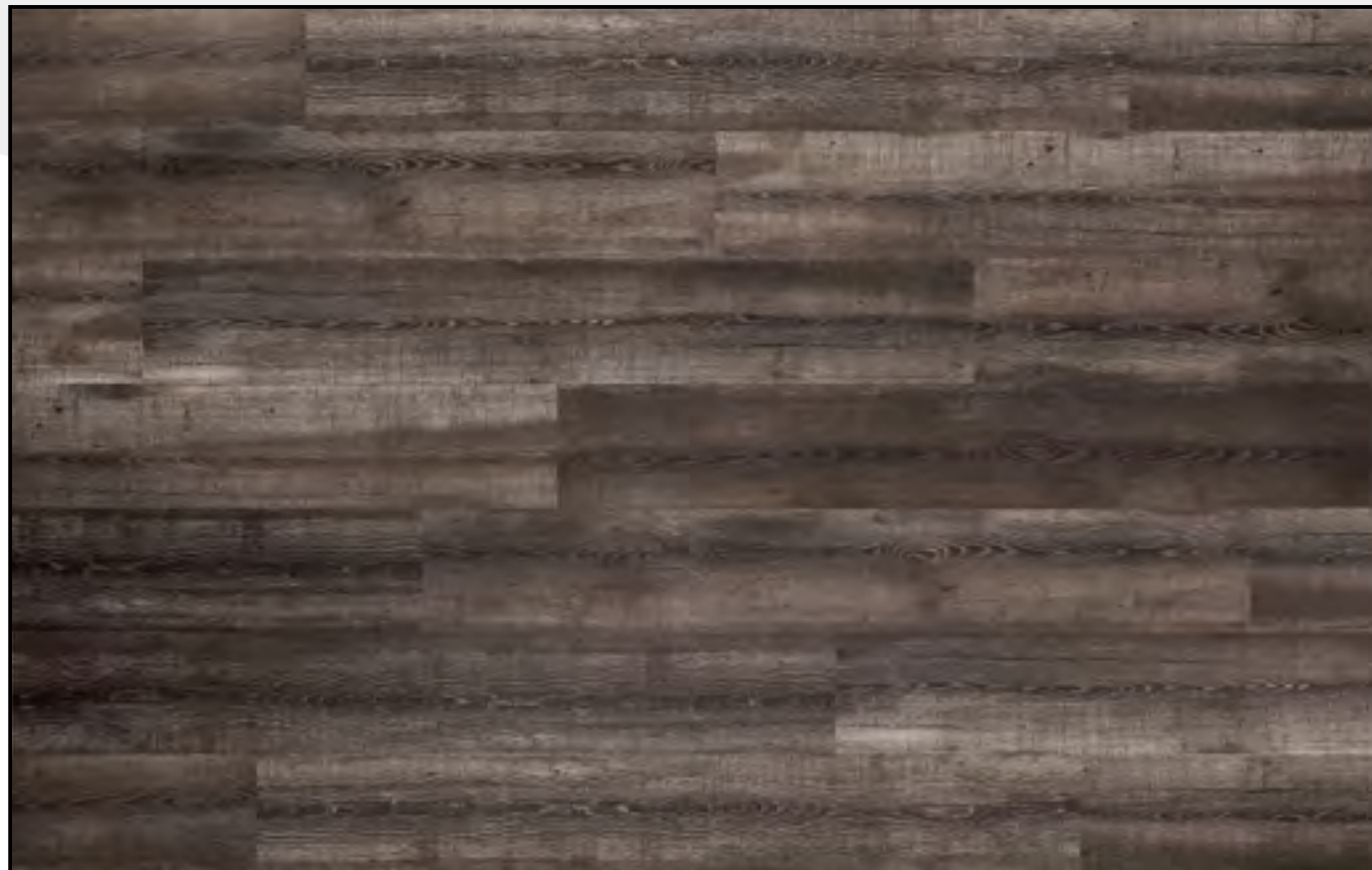
GWR 011

oak-graphite grey



GWR 001

oak-fieldcorn brown



GWR 008

oak-charcoal grey



GWR 009

oak-earth brown

True Spirit Original



GWR 004

oak-light grey



GWR 010

oak-barn brown



GWR 012

oak-umber brown



GWR 007

oak-raw umber

True Spirit Original



GWR 005

oak-original brown



GWR 016

oak-red brown



GWR 003

oak-aged brown



GWR 015

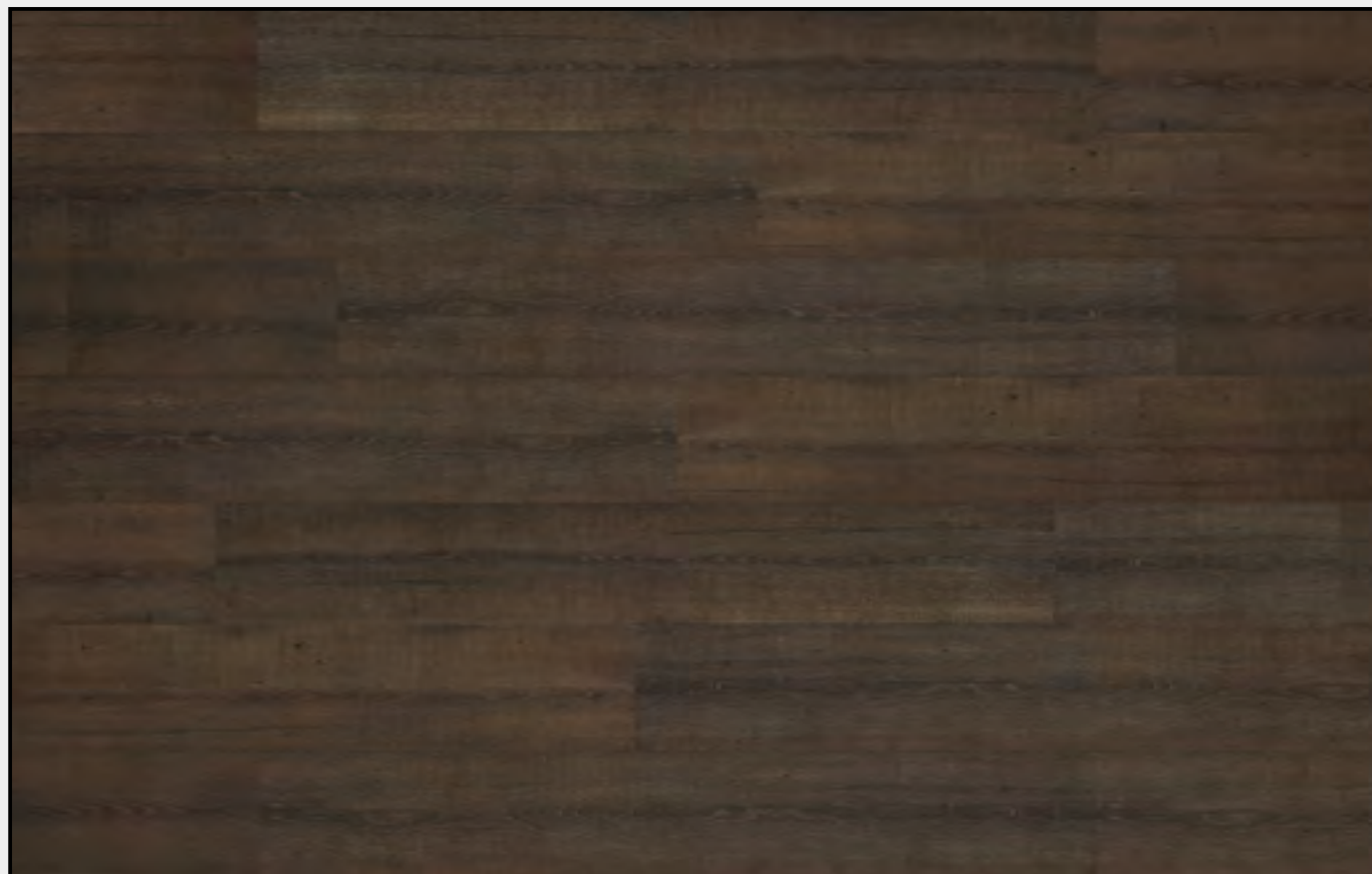
oak-cognac brown

True Spirit Original



GWR 006

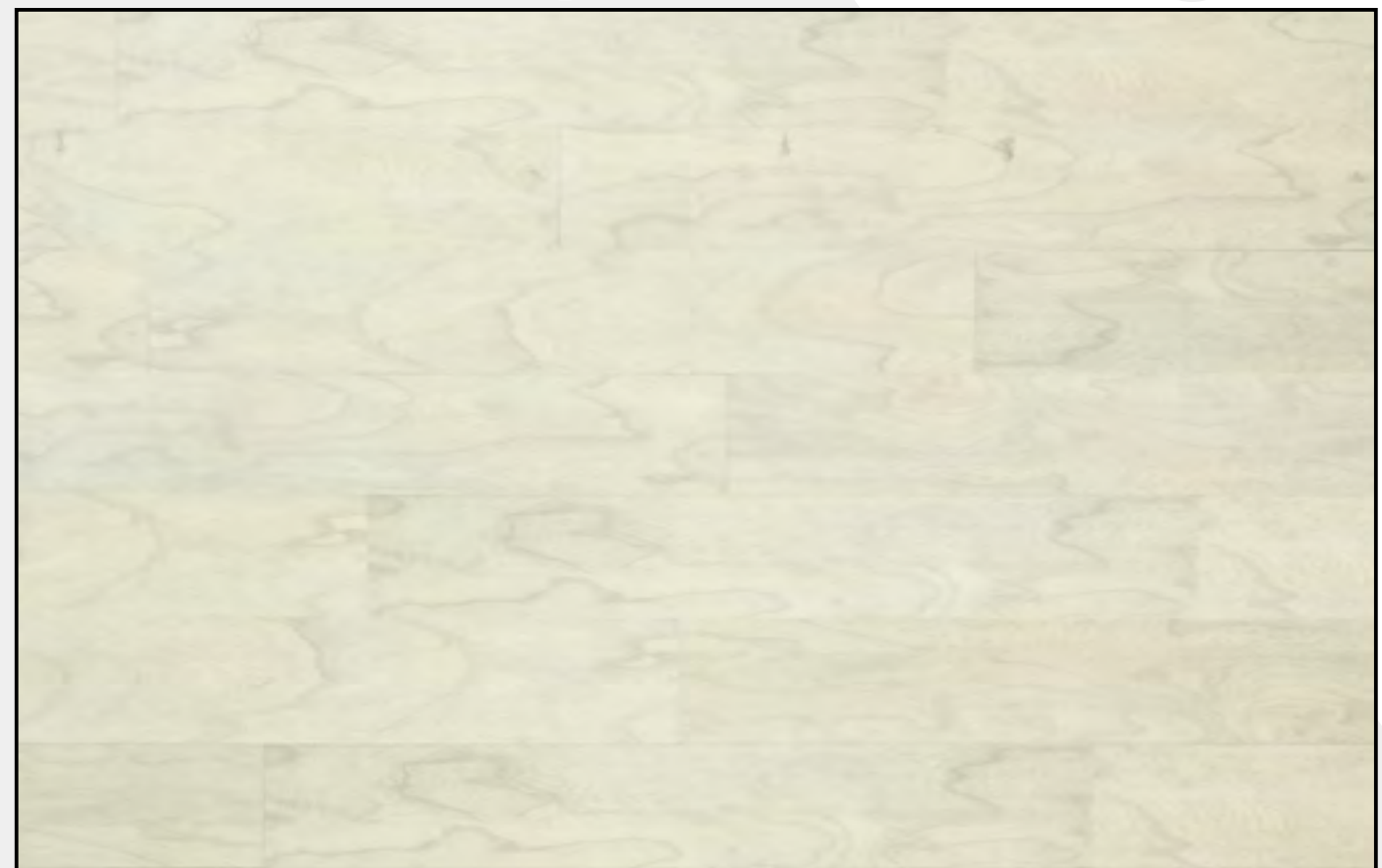
oak-medium brown



GWR 014

oak-dark brown

True Spirit Design



GWR 025

walnut-pearl white



GWR 022

walnut-contemporary brown

True Spirit Design



GWR 023

walnut-cognac brown



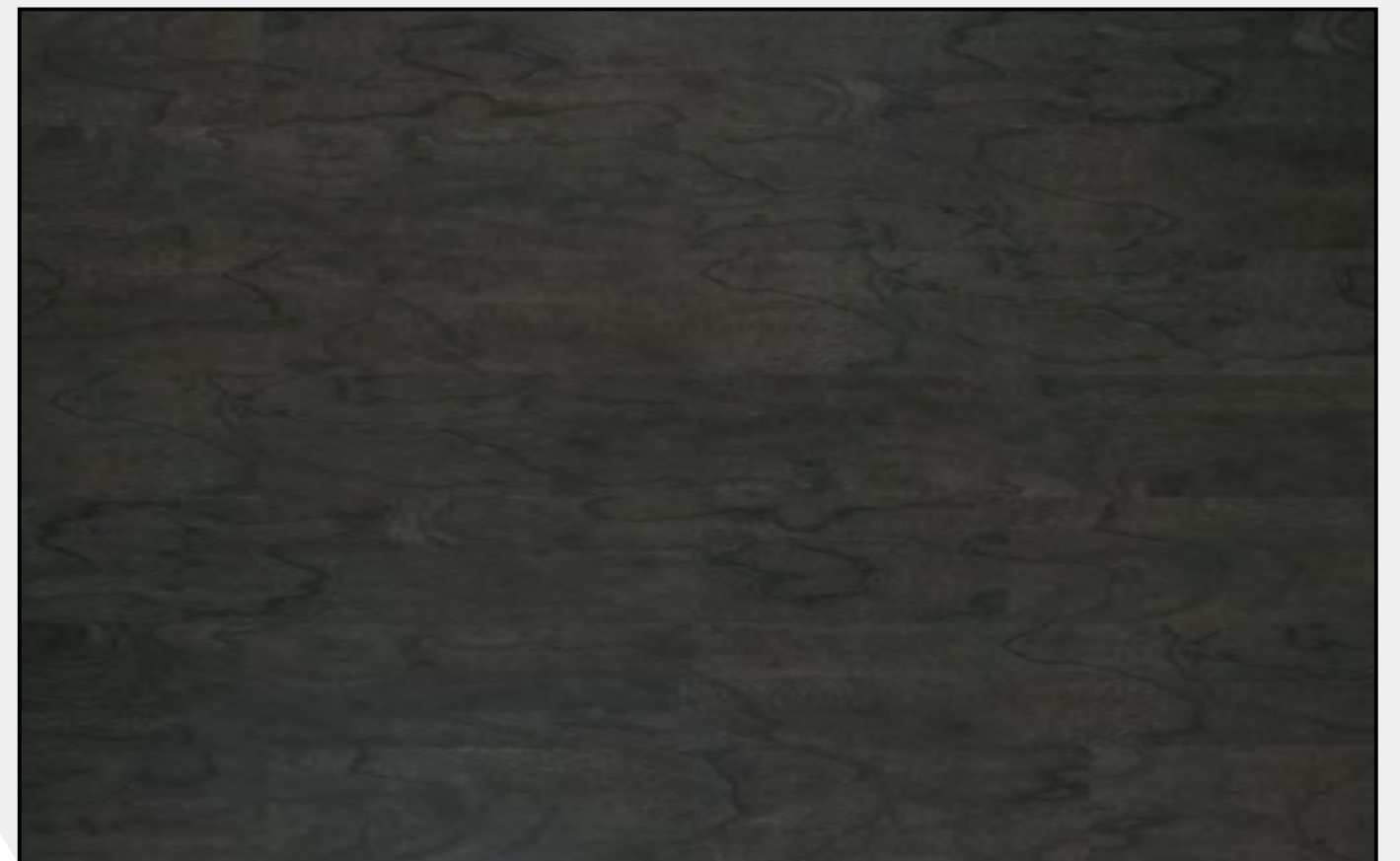
GWR 024

walnut-medium brown



GWR 021

walnut-genuine brown



GWR 026

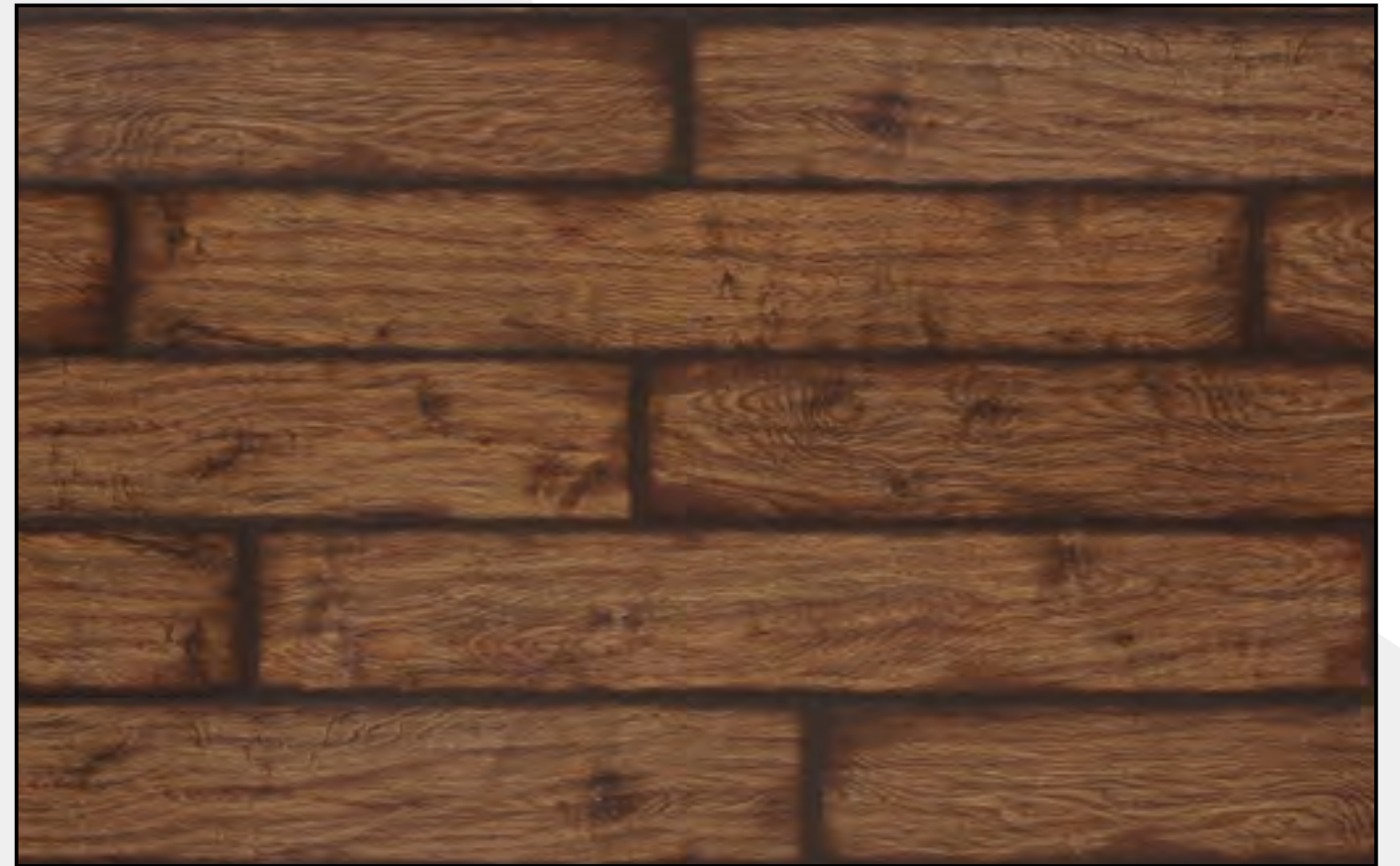
walnut-deep brown

True Spirit Crafted



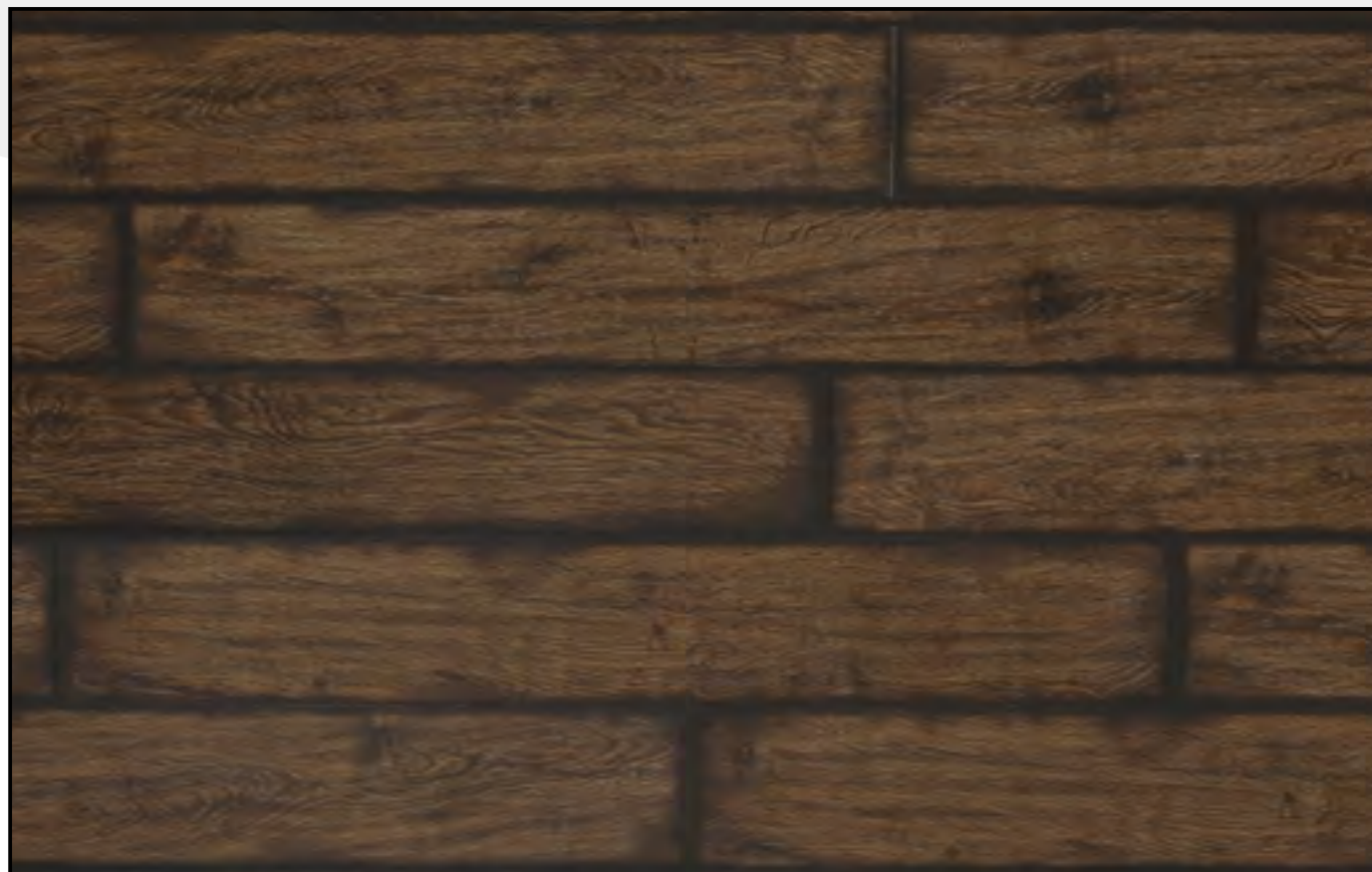
GWR 020

oak-indium grey smoked



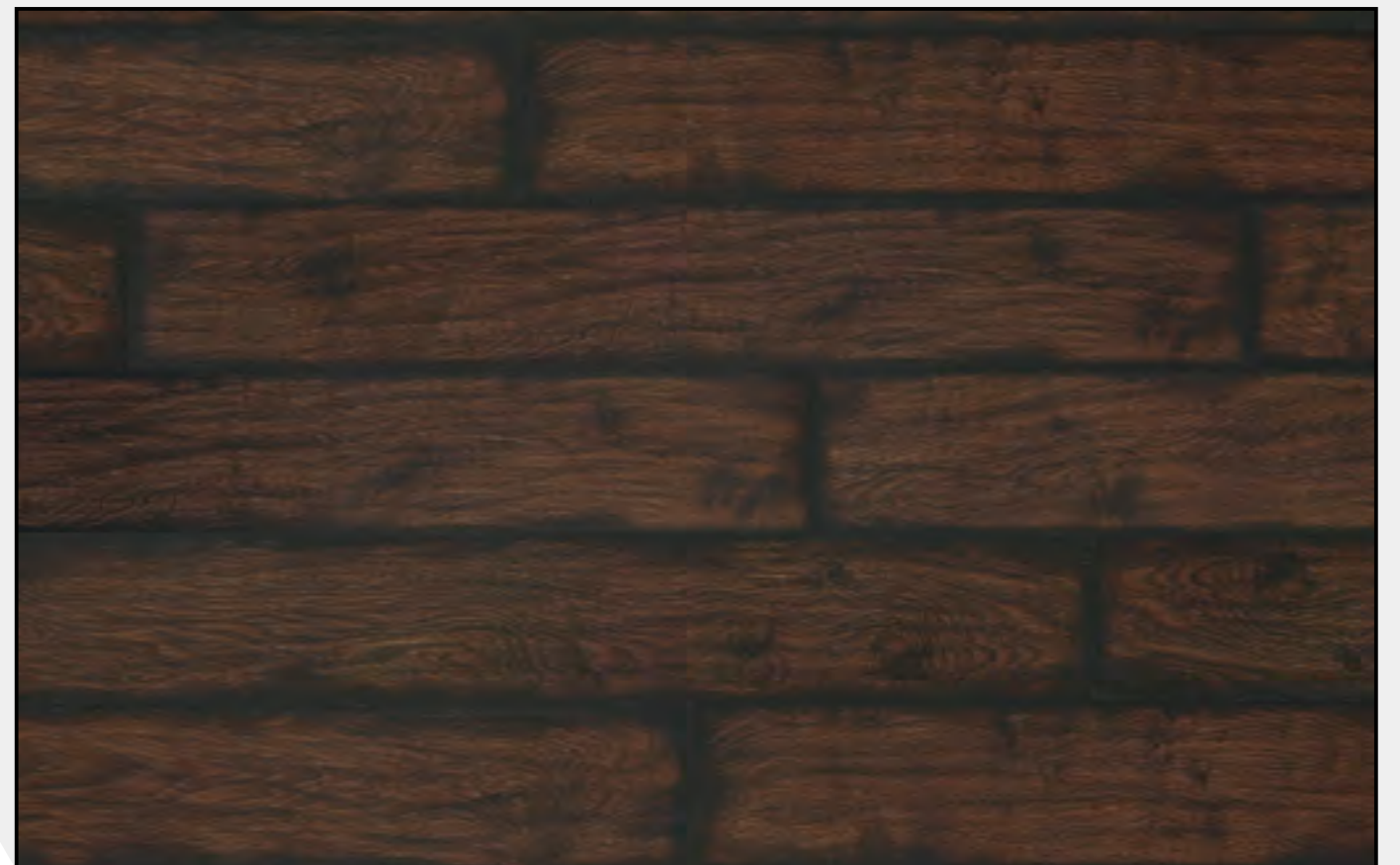
GWR 018

oak-cognac smoked



GWR 017

oak-pure brown smoked



GWR 019

oak-dark brown smoked



Modern Vintage

The Modern Vintage collection is characterized by its timeless spirit and can therefore be combined with any interior design style. This "parquet" in fish-bone or block pattern is originally a traditional and highly specialized product. As of the multiple necessary steps in installation, this can only be performed by the best specialists in order to get the required final result and appearance. By using the latest production- and printing techniques, it is now possible to create a floor with an identical appearance whilst having significantly fewer steps in the installation method and becomes therefore more widely accessible. The Modern Vintage is an exclusive floor with contemporary designs that combines modern and vintage in every sense. A classic floor with a modern twist!



Size: 304.8 x 76.2mm(L x W) 2.5mm total thickness / 0.55mm wear layer
 4 sides mini bevel User class: 33/42



GW F 055

oak-gold brown



GW F 056

oak-tundra beige

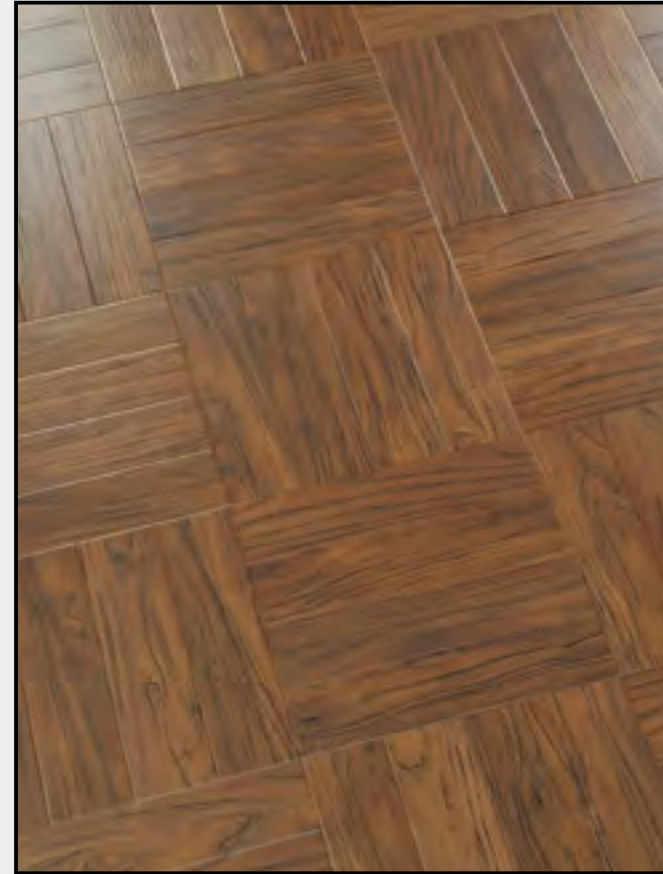
Modern Vintage



31201



oak-earth yellow



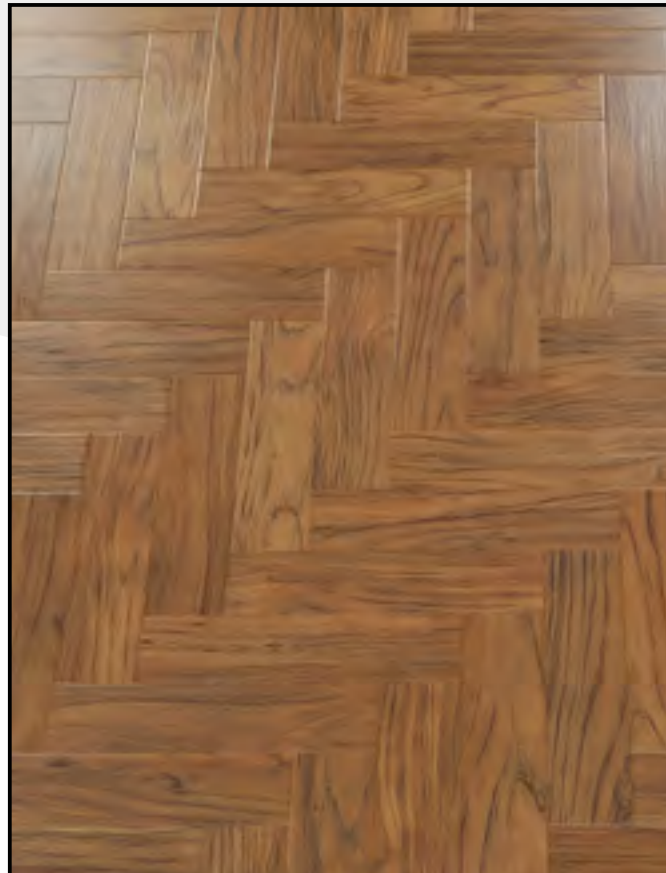
31203



oak-original brown



31202



oak-umber brown



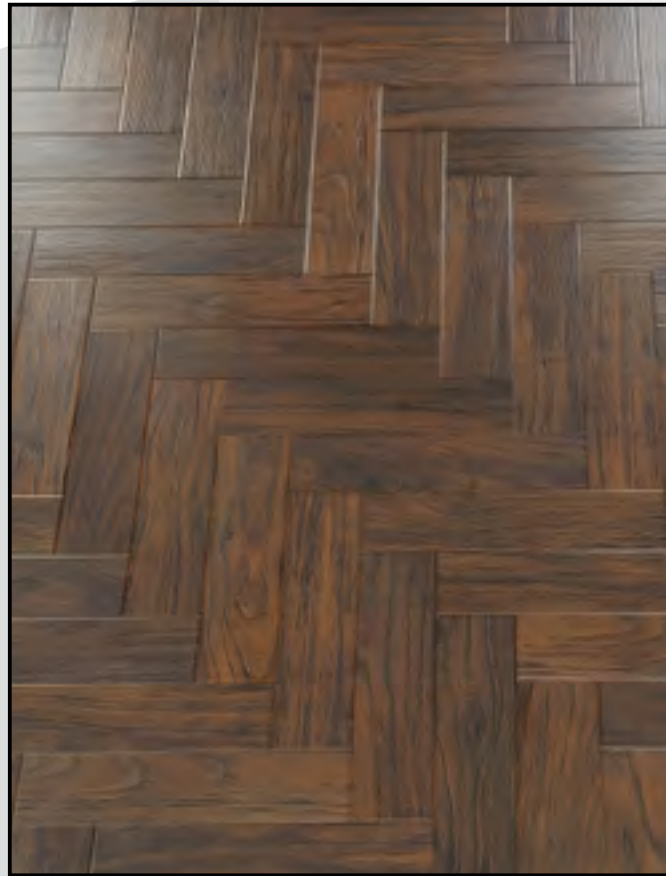
31204



oak-medium brown



31205



oak-earth brown



31206



oak-warm taupe



Modern Vintage

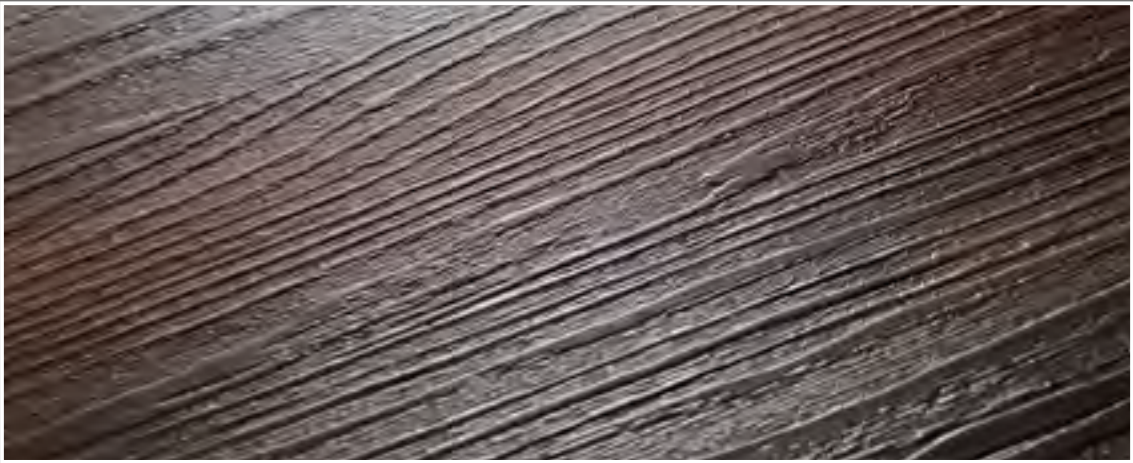


Nature Fit 30

The robust plank size combined with a sophisticated surface structure are making the Nature Fit 30 Collection to a must in your interior. The balanced choice of wood species and the special created natural colors are giving you the depth and subtle nuances as nature originally provides.

Thanks to the uniquely designed Green-Flor® products with Välinge® click system, providing a glue-less locking system for a convenient installation over many different subfloor surfaces, the planks are not adhered to the subfloor and therefore do not need drying time which makes your floor immediately usable. Soft underfoot, essentially waterproof and moisture resistant, makes the floor on top of it very suitable for those places where barefoot walking is desirable.

Comfort, safety but above all a relish for the eye !



Size: 1219 x 184.1mm(L x W) 4mm total thickness / 0.3mm wear layer
4 sides mini bevel User class: 23/31



GWC 1502

oak-original subtle brown



GWC 1503

oak-original warm brown

Nature Fit 30



GWC 1501

oak-contemporary indium grey



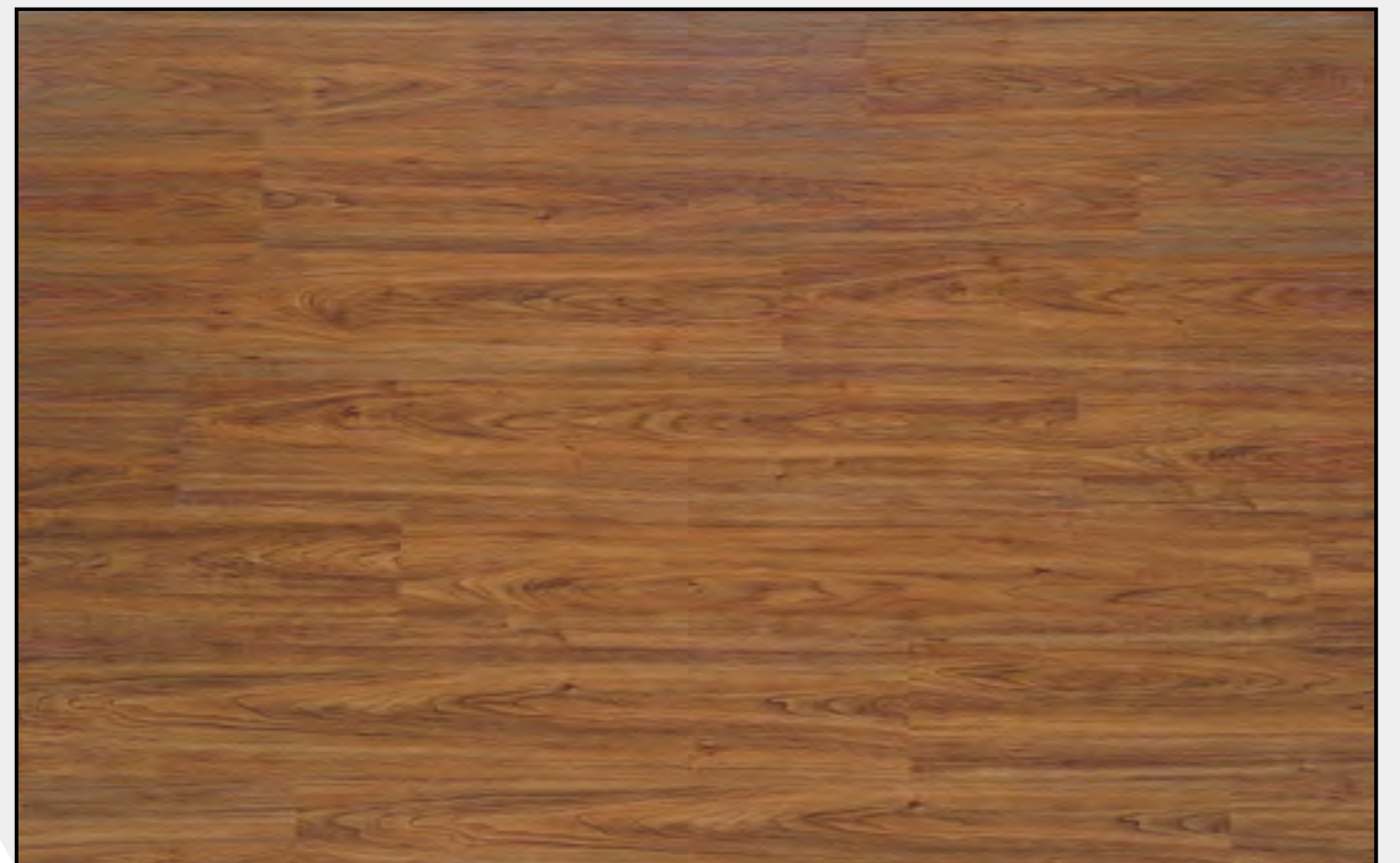
GWC 1506

oak - crafted wood brown



GWC 1504

oak-original umber brown



GWC 1505

cherry-original cognac brown

Nature Fit 30



GWC 1508

oak-crafted barn brown



GWC 1507

oak - crafted antique brown



GWC 1509

oak-crafted earth brown



GWC 1510

oak - contemporary graphite grey

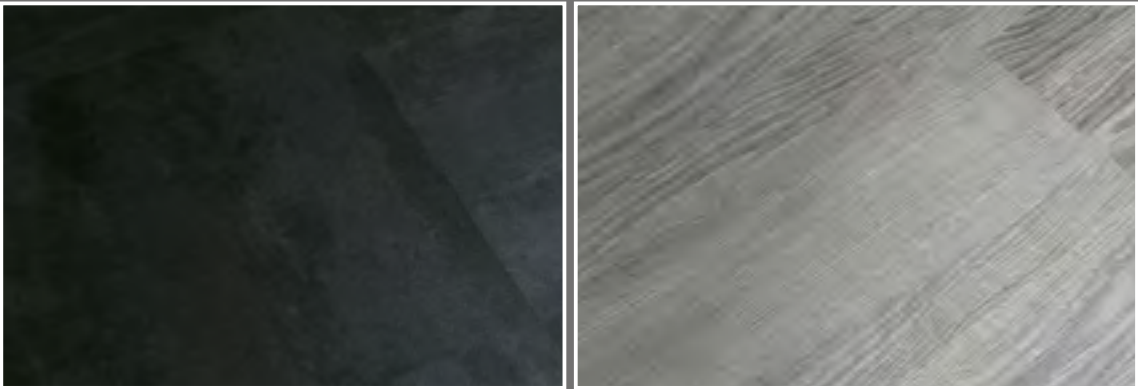


Performance 70

PERFORMANCE 70 is a modular resilient flooring developed specifically for heavy-traffic areas. This loose-lay flooring, is quick and easy to install with no need for permanent glue or hot welding. Tiles or planks can be replaced or removed and re-installed without damage to the sub- or original hard flooring below and does not leave any residues, being interesting for both owner and tenant in commercial or residential-housing spaces. PERFORMANCE 70 in projects is not only an ideal and extra efficient alternative for retail areas, hotels or offices and buildings where quick installation is a must, but also ultimately fit for any office where there are raised floors with frequent access required to cables and pipes.

The Performance 70 Collection provides you a balanced design- and color pallet for the plank and a unique natural color gradation in the subtle designs of the tile. Both enhanced with a surface texture generating the distinctive and original natural appearance. Together with the subtle v-groove on 4 sides, it utterly contributes to a high class atmosphere in every space.

The metamorphosis of your interior will be swift and sure!



Size: 457.2 x 457.2mm(L x W) Size: 1219 x 228.6mm(L x W)
 5mm total thickness / 0.7mm wear layer 4 sides mini bevel User class: 34/43



PE 70405

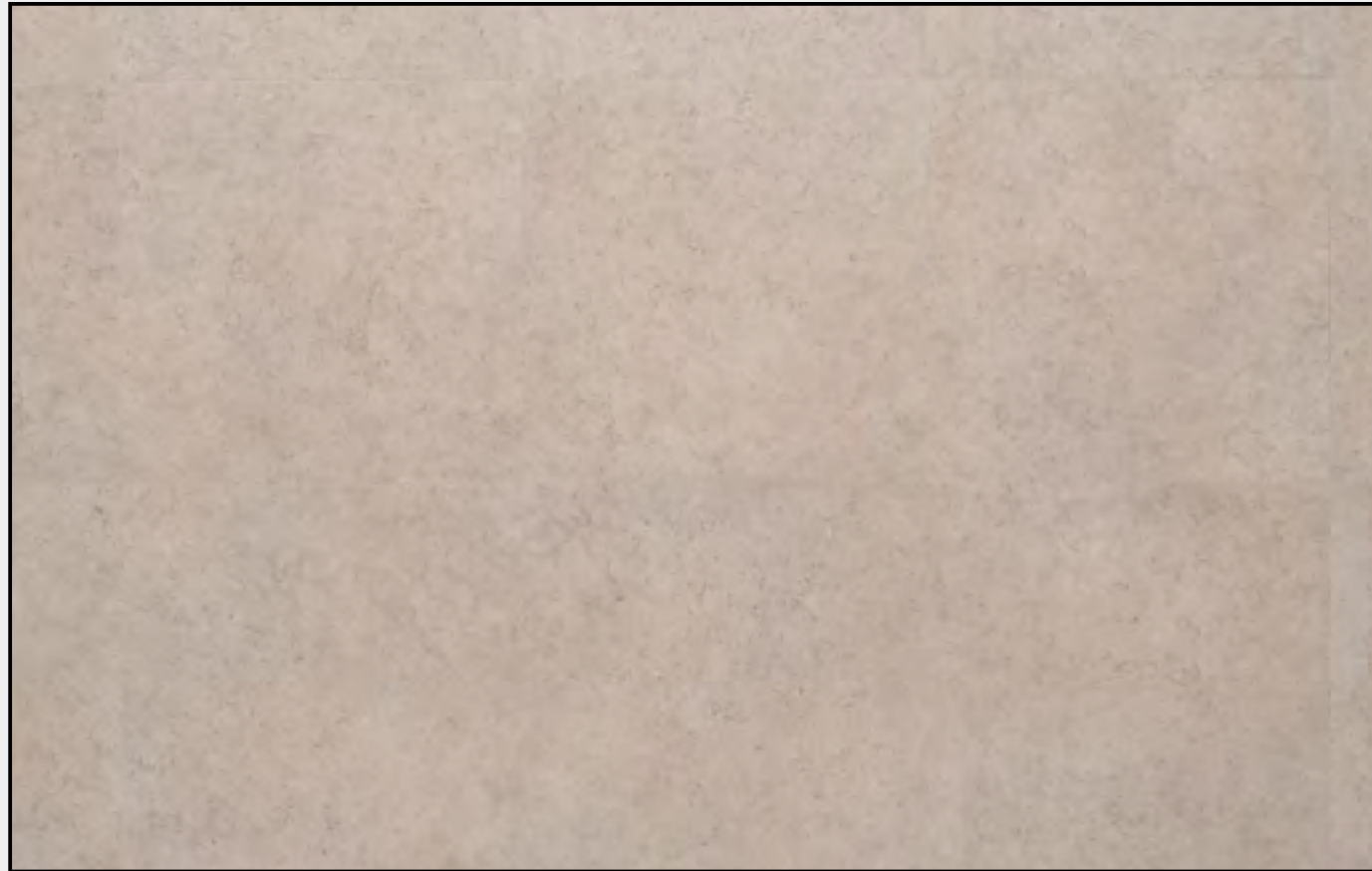
concrete original indium grey



PE 70404

concrete original graphite grey

Performance 70



PE 70407

Marble almond beige



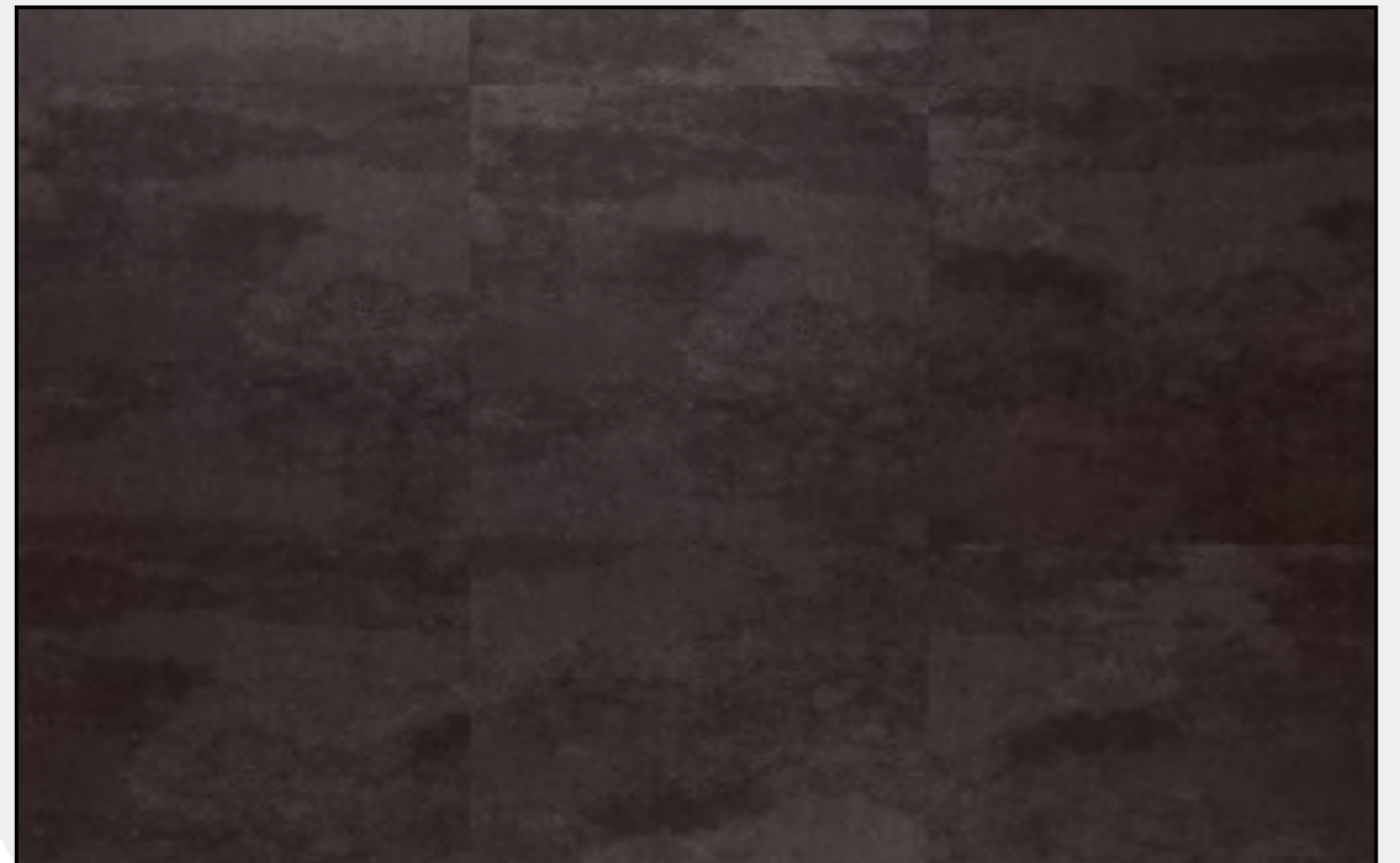
PE 70408

Marble charcoal grey



PE 70409

Marble pewter grey



PE 70401

concrete original charcoal grey

Performance 70



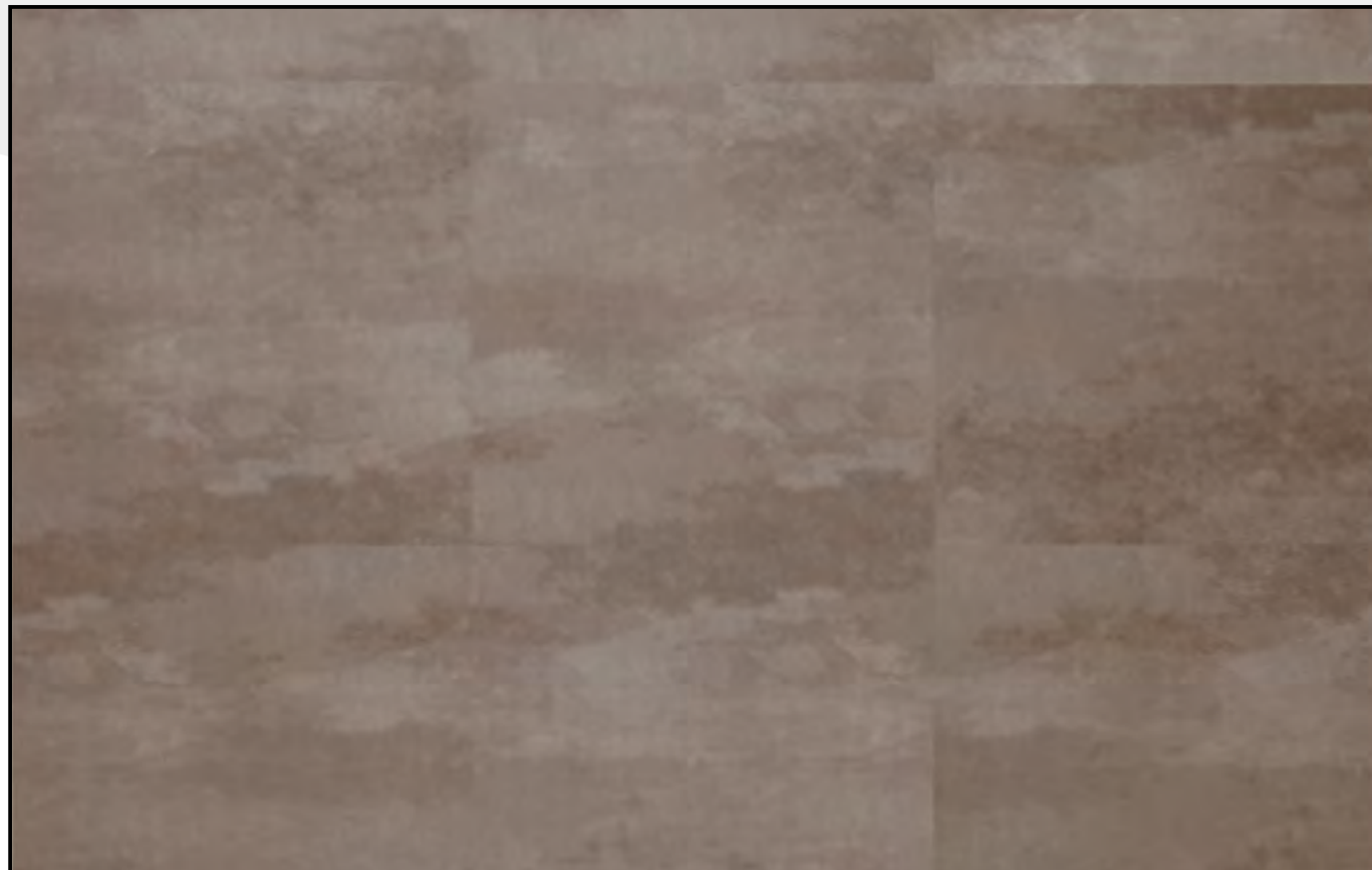
PE 70406

concrete original light brown



PE 70049

pine fieldcorn brown



PE 70403

concrete original umber brown



PE 70058

oak light brown

Performance 70



PE 70059

oak contemporary indium grey



PE 70057

oak contemporary indium graphite grey



PE 70046

oak pewter grey



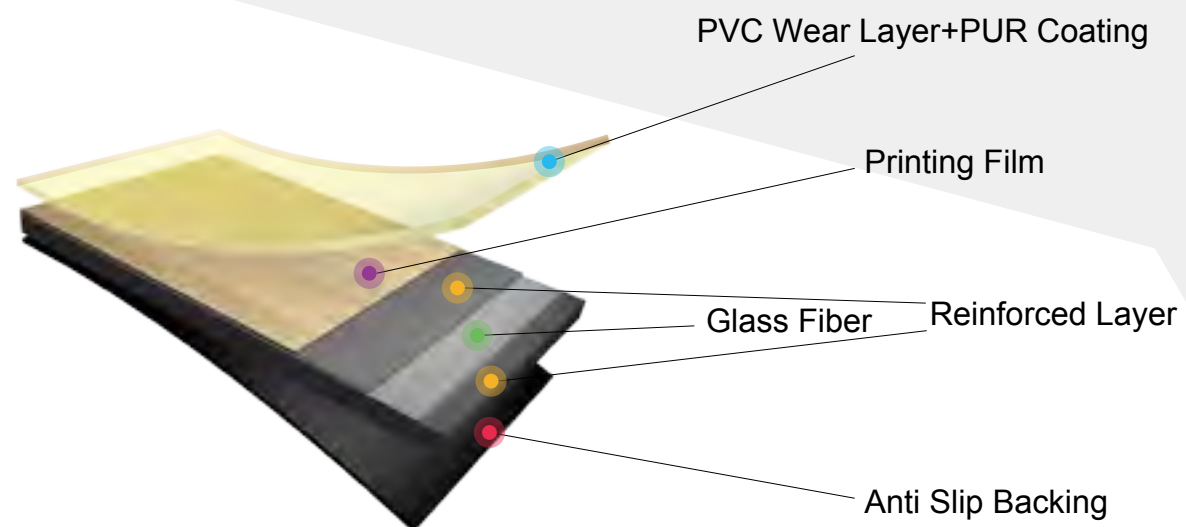
PE 70048

pine barn brown



PE 70053

oak almond brown

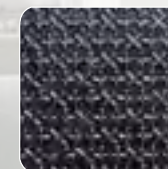


PERFORMANCE 70

Loose Lay Plank and Tile

Ultra reliable and fast installation without glue or snap

- ✓ The best and most reliable Loose Lay in the market
 - Weight of 9,1 kg/m², enhancing the technical performance of the product in installations.
 - Reinforced with glass fiber
 - Best dimension stability values, tested at ≤ 0,10%, guaranteeing a no problem solution for wall to wall installation.
 - A real anti-slip backing
- ✓ Fastest installable floor in the market – up to 50% time-saving
- ✓ In case of unforeseen circumstances, easy replacement of individual tile or plank
- ✓ Original hard floor covering below remains intact
- ✓ Reusability of product



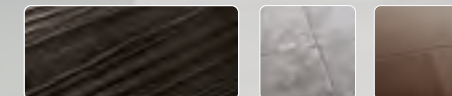
Excellent resistance to the daily aggressions

- ✓ Excellent cleaning properties and extra scratch resistance due to special formulated double protection PUR coating on the wear layer.



Attractive and realistic product and designs

- ✓ Largest available Loose Lay plank, fully in the tendency of market 1219 x 228,6 mm.
- ✓ Most natural genuine look
 - Lowest repetition of woods designs by use of unique production- and printing techniques.
 - Realistic deep surface structure – embossing – of the products
 - Lowest gloss degree
 - V-groove 4 sides.



A safe product respecting the environment and healthy living conditions

- ✓ Product and production conform ISO 14001 and REACH
- ✓ Best ranking values in the market for TCOV < 10 µg/m³ (28 jours), Test ÖTI n°71995.



*Information sur le niveau d'émission de substances volatiles dans l'air intérieur, présentant un risque de toxicité par inhalation, sur une échelle allant de A+ (très faibles émissions) à C (fortes émissions)

*ISO 16000/AFFSET

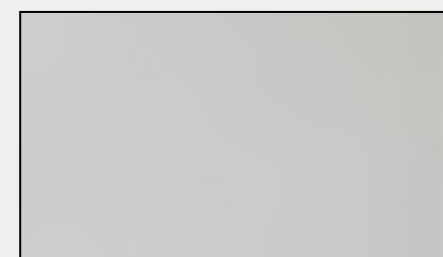


Pure & Powerful

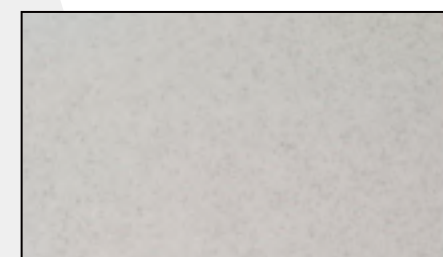
Pure & Powerful is a surprising collection of fresh uni-color tones. In a smooth surface structure or with e.g. tread plate embossing, you are able to create a unique atmosphere; from hyper modern to industrial vintage. The version with the sparkling inlays gives even a virtual 3D effect to the floor which fascinates your eye. From children bedroom, kitchen, kindergarden, cantine or reception, this floor offers you a great possibility to set you own accents and follow your creative interior concepts.
Pure & Powerful !



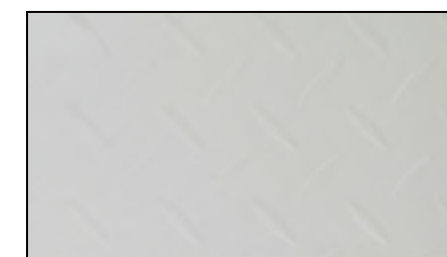
Size: 457.2 x 457.2mm(L x W) 2.5mm total thickness / 0.55mm wear
User class: 33/42



GU 01



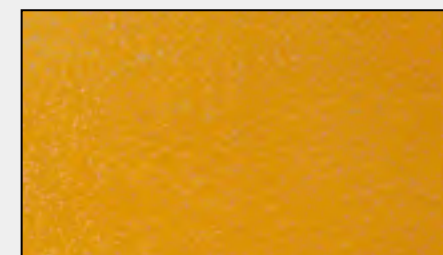
GC 01



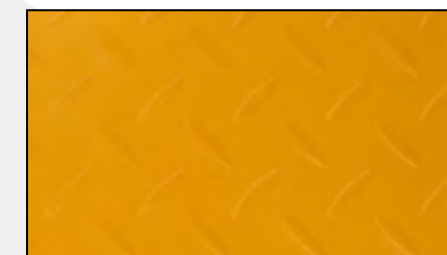
GM 01



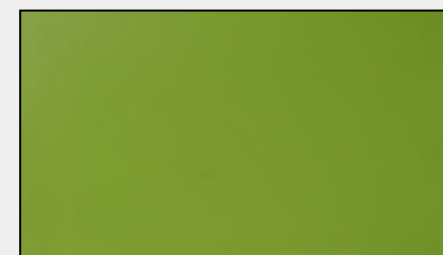
GU 02



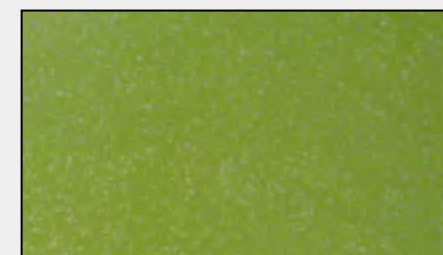
GC 02



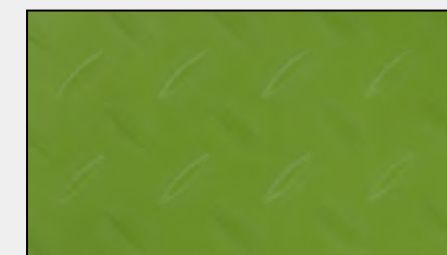
GM 02



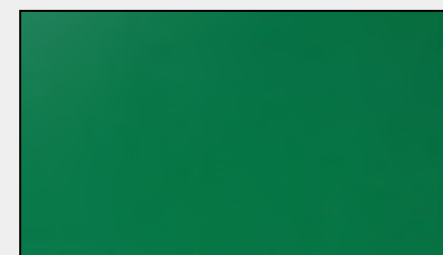
GU 03



GC 03



GM 03



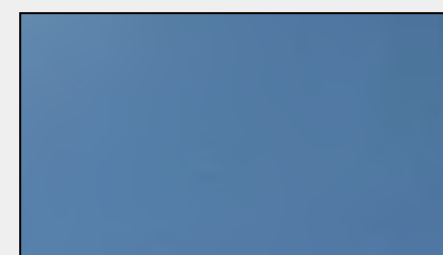
GU 04



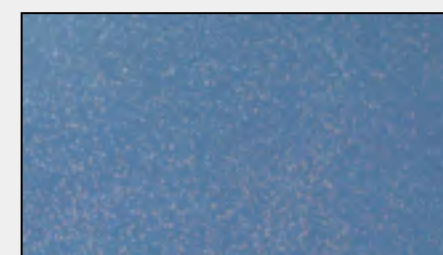
GC 04



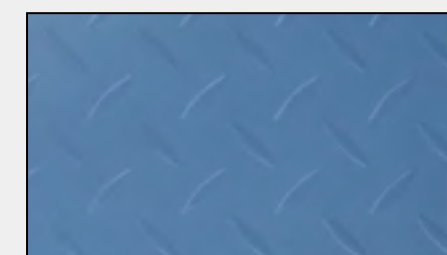
GM 04



GU 05



GC 05



GM 05

Pure & Powerful



GU 06



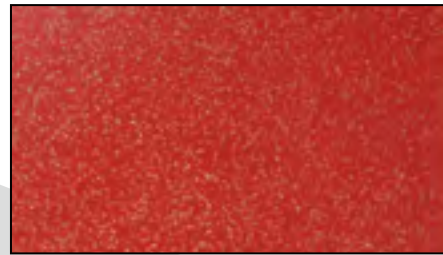
GC 06



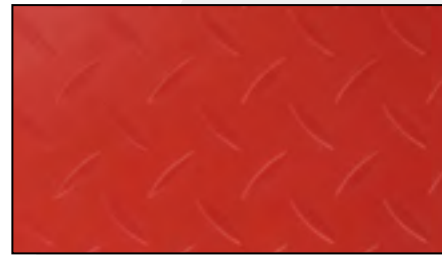
GM 06



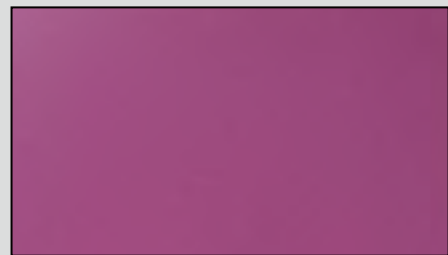
GU 07



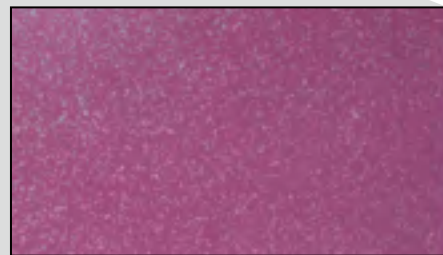
GC 07



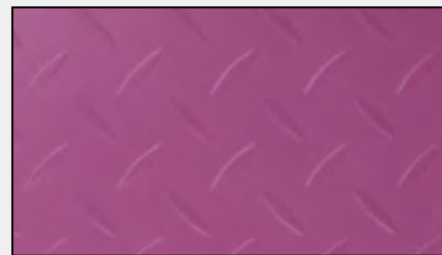
GM 07



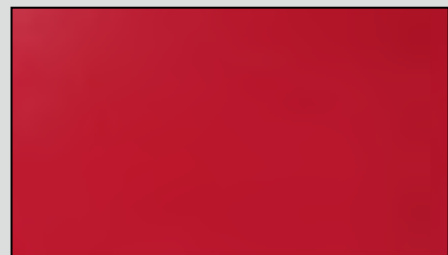
GU 08



GC 08



GM 08



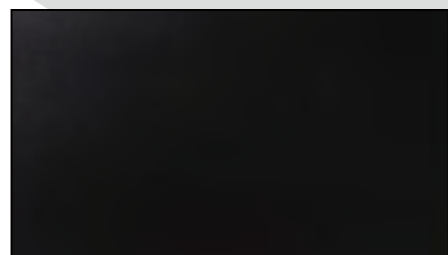
GU 09



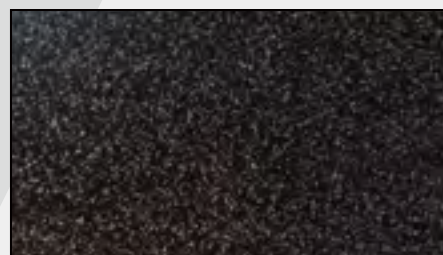
GC 09



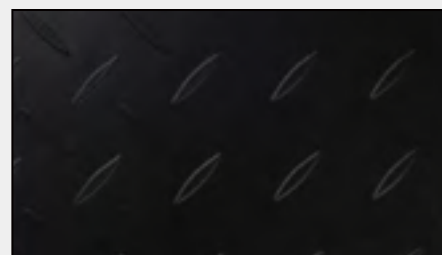
GM 09



GU 10



GC 10



GM 10



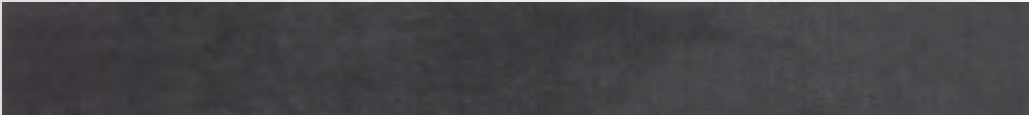
Pure & Powerful

Design Strips

Design Strips are an enriching accessory for your floor. Your natural and authentic floor will get that extra bit of character and class and also allows you to integrate your own creative ideas; a boat deck effect in your wooden floor, a real natural grouting effect in your stone floor or creating for instance a stylish design with border strip in an attractive color accent.

The design strips are available in different width and below given 4 colors, designed specifically for the series True Spirit, Master Collection, Modern Vintage and New Square because of their thickness of 2.5 mm. Choose any of the below 4 colors to set your own accents !

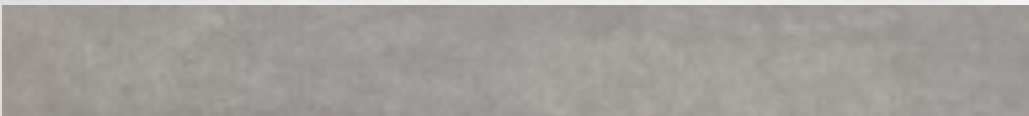
Size of 1 strip: 914 x 3mm (L x W) 2.5mm total thickness / 0.55mm wear layer



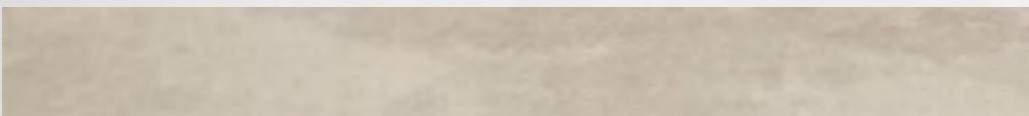
GA 00601



GA 00603

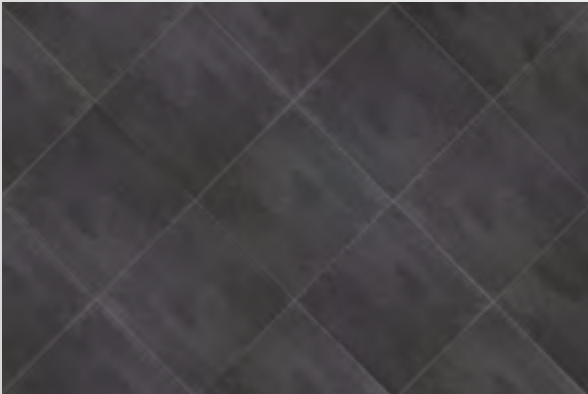


GA 00605

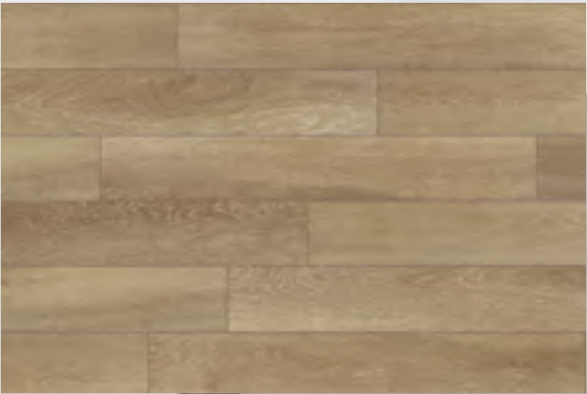


GA 00607

Packing: 25 strips per box

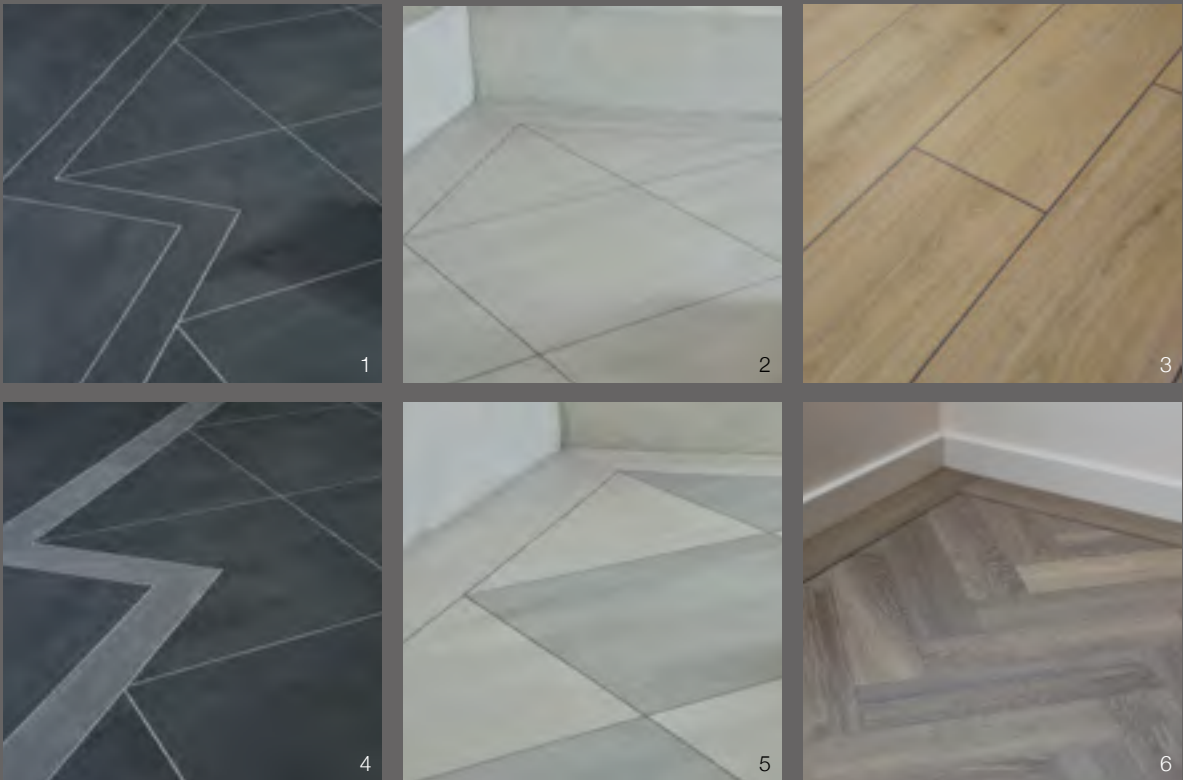


New Square tile color GT 601 with design strip GA 03605



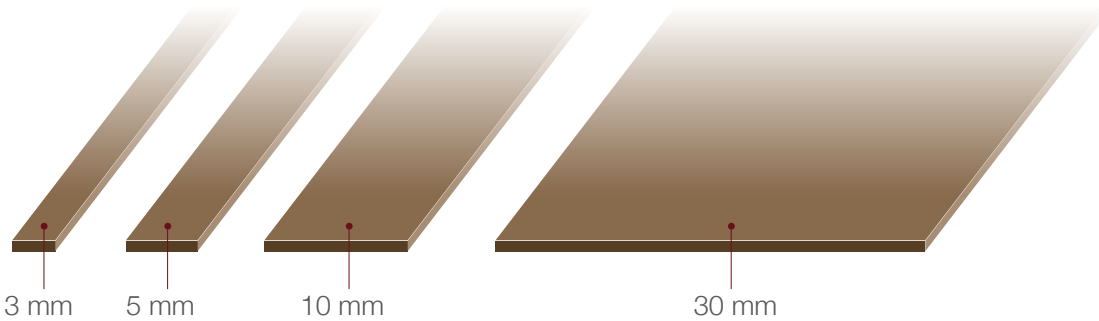
Master Collection plank color GW 056 with design strip GA 03601

Inspiration for your floor



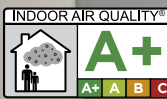
- 1. New Square tile color GT 601 with design strip GA 03605
- 2. New Square tile color GT 607 with design strip GA 03601
- 3. Master Collection plank color GW 054 with design strip GA 03601
- 4. New Square tile color GT 601 with border in color GT 605 and design strip GA 03605
- 5. New Square tile combination color GT 605 and GT 607 with design strip GA 03601
- 6. Modern Vintage fish bone plank color GWF 056 with border in Master Collection color GW 056 and design strip GA 03601

All Available Size



Product Specification

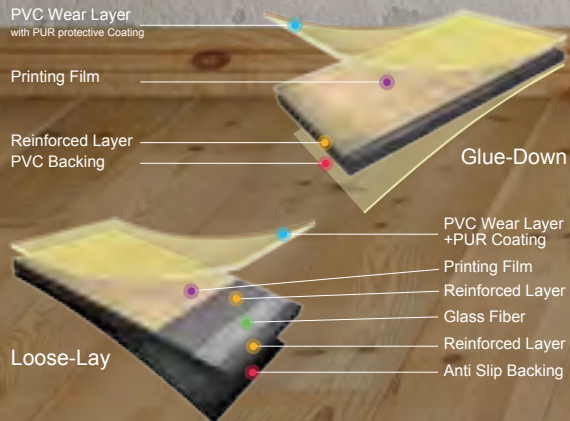
Description	Norms	Standard Requirement	Test Results Young Living Authentic Mood Pure Plaza Glue Down - Plank	Test Results Master Collection Glue Down - Plank	Test Results New Square Pure & Powerful Glue Down - Tile	Test Results True Spirit Glue Down - Plank registered embossing	Test Results Modern Vintage Glue Down - Mini Plank Fishbone	Test Results PERFORMANCE 30 - 55 - 70 Loose Lay - Plank and Tile
Type offlooring	EN 649, EN ISO 10582	Heterogen, PVC	√	√	√	√	√	√
Classification	EN 685, EN ISO 10874	23/ 33/ 42, 31/ 34/ 43	23 / 31	33 / 42	33 / 42	33 / 42	33 / 42	34 / 43
Total thickness	EN 428, EN ISO 24346	-	2.0 mm	2.5 mm	2.5 mm	2.5 mm	2.5 mm	5.0 mm
Wearlayer	EN 429, EN ISO 24340	-	0.3 mm	0.55 mm	0.55 mm	0.55 mm	0.55 mm	0.30 - 0.55 - 0.70 mm
Weight	EN 430, EN ISO 23997	-	3.5 kg/ m²	4.4 kg/ m²	4.4 kg/ m²	4.4 kg/ m²	4.4 kg/ m²	9.1 kg/ m²
Surface treatment	-	-	Top Protection Plus PUR top protection coating	Top Protection Plus PUR top protection coating	Top Protection Plus PUR top protection coating	Top Protection Plus PUR top protection coating	Top Protection Plus PUR top protection coating	Top Protection Plus PUR top protection coating
Squareness & straightness	EN 427, EN ISO 24342	< 0.35 mm toleranz	√, < 0.2 mm	√, < 0.2 mm	√, < 0.2 mm	√, < 0.2 mm	√, < 0.2 mm	√, < 0.2 mm
Dimension stability	EN 434, EN ISO 23999	< 0.25%	√, 0.05 %	√, 0.05 %	√, 0.05 %	√, 0.05 %	√, 0.05 %	√, 0.05 %
Curling	EN 434, EN ISO 23999	< 2 mm	√, 0 mm	√, 0 mm	√, 0 mm	√, 0 mm	√, 0 mm	√, 0 mm
Flexibility	EN 435-A, EN ISO 24344-A	20 mm no crack	√	√	√	√	√	√
Abrasion resistance	EN 660-2, EN ISO 10582	Class T, < 2 mm³	√	√	√	√	√	√
Residual indentation	EN 433, EN ISO 24343	< 0,1 mm	√, 0.08 mm	√, 0.05 mm	√, 0.05 mm	√, 0.05 mm	√, 0.05 mm	√, 0.08 mm
Castor wheel chair	EN 425, ISO 4918	25.000 revolutions	√, type W	√, type W	√, type W	√, type W	√, type W	√, type W
Slip resistance	EN 13893/ DIN 51130/ EN 14041: 2004/AC:2006	0,43 - 0,63/ R9/ DS	√, R9/ DS	√, R9/ DS	√, R9/ DS	√, R9/ DS	√, R9/ DS	√, R9/ DS
Color fastness	EN ISO 105-B02	≥ 6	√	√	√	√	√	√
Chemical resistance	EN 423, EN ISO 26987	Sodium Hydroxide(25%), Citric acid (10%), coffee	Excellent	Excellent	Excellent	Excellent	Excellent	Excellent
Fire resistance	EN 13501-1/ EN ISO 9239-1/ 11925-2 EN 14041: 2004/AC:2006	Bfl-s1	√, Bfl-s1	√, Bfl-s1	√, Bfl-s1	√, Bfl-s1	√, Bfl-s1	√, Bfl-s1
Thermal resistance	EN ISO 8302	0,01 m² K/W	0,01 m² K/W	0,019 m² K/W	0,019 m² K/W	0,019 m² K/W	0,019 m² K/W	0,018 m² K/W
Underfloor heating	EN 1264-2	-	√, suitable max. 27°C	√, suitable max. 27°C	√, suitable max. 27°C	√, suitable max. 27°C	√, suitable max.27°C	√, suitable max. 27°C
Emissions formaldehyde	EN 14041: 2004/AC:2006	E1	E1	E1	E1	E1	E1	E1
Content pentachlorophenol	EN 14041: 2004/AC:2006	no use	√	√	√	√	√	√
Emissiontest TVOC after 28 days	ISO 16000	√, certified A+	√, certified A+	√, certified A+	√, certified A+	√, certified A+	√, certified A+	√, certified A+



*ISO 16000/AFFSET
*Information sur le niveau d'émission de
substances volatiles dans l'air intérieur,
présentant un risque de toxicité par
inhalation, sur une échelle allant de A+ (très
faibles émissions) à C (fortes émissions)



Delivery form	Size	Content carton
Young Living, True Spirit	1219 x 184.1 mm (LxW)	3.37 m²
Authentic Mood Master Collection	1219 x 228.6 mm (LxW)	3.34 m²
Modern Vintage	76.2 x 304.8 mm (LxW)	3.34 m²
Pure Plaza New Square	600 x 600 mm (LxW)	3.24 m²
Performance- Tile	457 x 457 mm (LxW)	1.67 m²
Performance- Plank	1219 x 228.6 mm (LxW)	2.23 m²
Nature Fit	1219 x 184.1 mm (LxW)	1.94 m²
Pure & Powerful	457 x 457 mm (LxW)	3.34 m²



Test Results Nature Fit 30 - 55 - 70 Click Plank	Standard Requirement	Norms	Description
√	Heterogen, PVC	EN 649, EN ISO 10582	Type of flooring
23 / 31	23/ 33/ 42, 31/ 34/ 43	EN 685, EN ISO 10874	Classification
4.0 mm	-	EN 428, EN ISO 24346	Total thickness
0.30 - 0.55 - 0.70 mm	-	EN 429, EN ISO 24340	Wearlayer
8.3 kg/ m²	-	EN 430, EN ISO 23997	Weight
Top Protection Plus PUR top protection coating	-	-	Surface treatment
√	> 1.5 kg/cm	EN 431, EN ISO 24345	Peeling strength of layers
√	good	EN 432	Shear force of layers
√	Shrinkage ≤ 0.25 %, Curling ≤ 2 mm	EN 434, EN ISO 23999	Dimension stability
√	20 mm no crack	EN 435-A, EN ISO 24344-A	Flexibility
√	Class T, ≤ 2.0 mm³	EN 660-2, ASTM F 510	Abrasion resistance
√	< 0,1 mm	EN 433, EN ISO 24343	Residual indentation
√	suitable	EN 425, ISO 4918	Castor wheel chair
√	R9/ DS	EN 13893/ DIN 51130/ EN 14041: 2004/AC:2006	Slip resistance
√	≥ 6	EN ISO 105-B02	Color fastness
√	class 0	EN 423, EN ISO 26987 ASTM F925	Chemical resistance
√	Bfl-s1 , class 1	EN 13501-1/ EN ISO 9239-1/ 11925-2 EN 14041: 2004/AC:2006 ASTM E648	Fire resistance
√	0,019 m² K/W	EN ISO 8302	Termal resistance
√	-	-	Underfloor heating
√	E1	EN 14041: 2004/AC:2006	Emissions formaldehyde
√	no use	EN 14041: 2004/AC:2006	Content pentachlorophenol
√	comply	GB/T 18586	Toxic
√	< 5%	EN 14085, Annex B, EN 669	Dimension variations caused by changes in atmospheric humidity
√	Average < 0.15 mm	EN 14085, Annex B,	Openings when assembly
√	Average < 0.15 mm	EN 14085, Annex B,	Height difference
√	Individual > 200 kgs/ m	Valinge method	Pull strength

Use	Product Specification	User Class
Residential only	2 mm total thickness 0.2 mm wear layers	Class 22
Residential Light commercial with moderate foot traffic (e.g. Hotel room, Conference room, & Small offices)	2.0/ 4.0 mm total thickness 0.3 mm wear layers	Class 23 Class 31
Commercial areas with heavy traffic (e.g. Retail outlets, Boutiques, Open plan offices, Care homes, Healthcare establishments, School & Colleges)	2.5/ 4.0/ 5.0 mm total thickness 0.55 mm wear layers	Class 33 Class 42
Commercial areas intensively use with very heavy traffic (Departments stores, Retail outlets, heavily used Multipurpose halls and Airports) Light Industrial areas with any traffic Production halls & Storage rooms	2.5/ 4.0/ 5.0 mm total thickness 0.7 mm wear layers	Class 34 Class 43

General Information

For optimal esthetics and longevity of the Green-Flor® modular resilient flooring, a basic set of requirements must be met. In the first place, during transport and storage, ensure that the cartons are flat and uniformly stacked. Prior to the installation at site, the cartons should again be stored flat and the products should be acclimatized in the relevant space for 24 hours at room temperature between 15 and 26 °C. This temperature must equally be maintained for 24 hours after the installation is completed. The relative humidity in the room should not exceed 70%. At the start and during installation, the product should be checked for quality, color, design, etc. This also will ensure that in large and/or connecting rooms the same batch number is applied. After installation, the floor should be rolled with a three-segment 70kg roller for optimum adhesion and adhesive distribution. For glue, common dispersion glue is recommended. An adhesive advice can be found with your local adhesive supplier. Avoid during laying, direct sunlight on your adhesive. During and at least 24 hours after installation, there may be no traffic on the floor and no furniture may be placed. The floor should not be exposed to water in the first 48 hours.

Subfloor

The Green-Flor® modular resilient flooring can be installed on various surfaces, provided that certain conditions are met. The surface must be flat, dry, smooth, clean, hard, firm and free of cracks, joints and other irregularities. The substrate should not be contaminated with paint, oil, grease, gypsum, or other substances which may have an influence on the adhesion of the floor. The flatness and drought are to be measured with the aid of suitable equipment and should be in accordance with the relevant standards in the respective country. Never install the products over the so-called expansion joints of the building without additional measures. Think about the possibility of using special profiles for this.

Floor heating- and cooling

The heating or cooling should be turned off 48 hours before the subfloor preparation takes place and remain off until at least 48 hours after the installation is completed. This in view of heating or condensation that may affect the bonding process of the glue. To again turn on the heating or cooling, the temperature can be changed in 5 ~ 7 days, with only a few degrees per day until the desired temperature is reached.

INSTALLATION INSTRUCTIONS AND MAINTENANCE

Installation instructions

Maintenance

The Green-Flor® modular resilient flooring with the Top Protection Plus system have a PUR protection and are thus highly resistant to dirt, stains and wear. Nevertheless Green-Flor® modular resilient flooring also needs to be cleaned regularly. How often and how is dependent on the place where the floor is, and the degree to which it is being used. Regular maintenance keeps the floor not only more beautiful and hygienic, it is also has a direct impact on the life time of your floor.

Preventive care and prevention of damage

Applying a good entrance mat or matting, largely prevents the ingress of dirt and moisture into the building and consequently onto your floor. It must be sized in such a way that walking on it is inevitable, and must have at least the length of a few steps.

Do not use a rubber, in combination with the floor. Migration can lead to a permanent dark brown discoloration.

Provide chair legs and other furniture from additional protection in order to protect your floor.

Browse to www.scratchnomore.com for the best protection of your floor. Do not slide heavy objects across the floor.

If necessary, replace the wheels under office chairs with wheels with double support rollers of type W (soft)

Daily maintenance

Use a vacuum cleaner or a dust mop to remove dust and dirt. Use a damp mop or cloth with a neutral detergent to remove 'stubborn' dirt better. It is recommended to use a separate 'rinse-bucket' for optimum results. Depending on the situation mechanical maintenance can bring an even better result if necessary.

Periodic maintenance

Depending on the intensity of use, the amount of dirt that is walked in and the way the daily maintenance is performed, and especially in big public projects, a scrub-suck machine with neutral detergent and equipped with a suitable red pad or a dry buffing high speed machine at 900 rpm with white pad, will yield a better result.



*Information sur le niveau d'émission de substances volatiles dans l'air intérieur, présentant un risque de toxicité par inhalation, sur une échelle allant de A+ (très faibles émissions) à C (fortes émissions)

